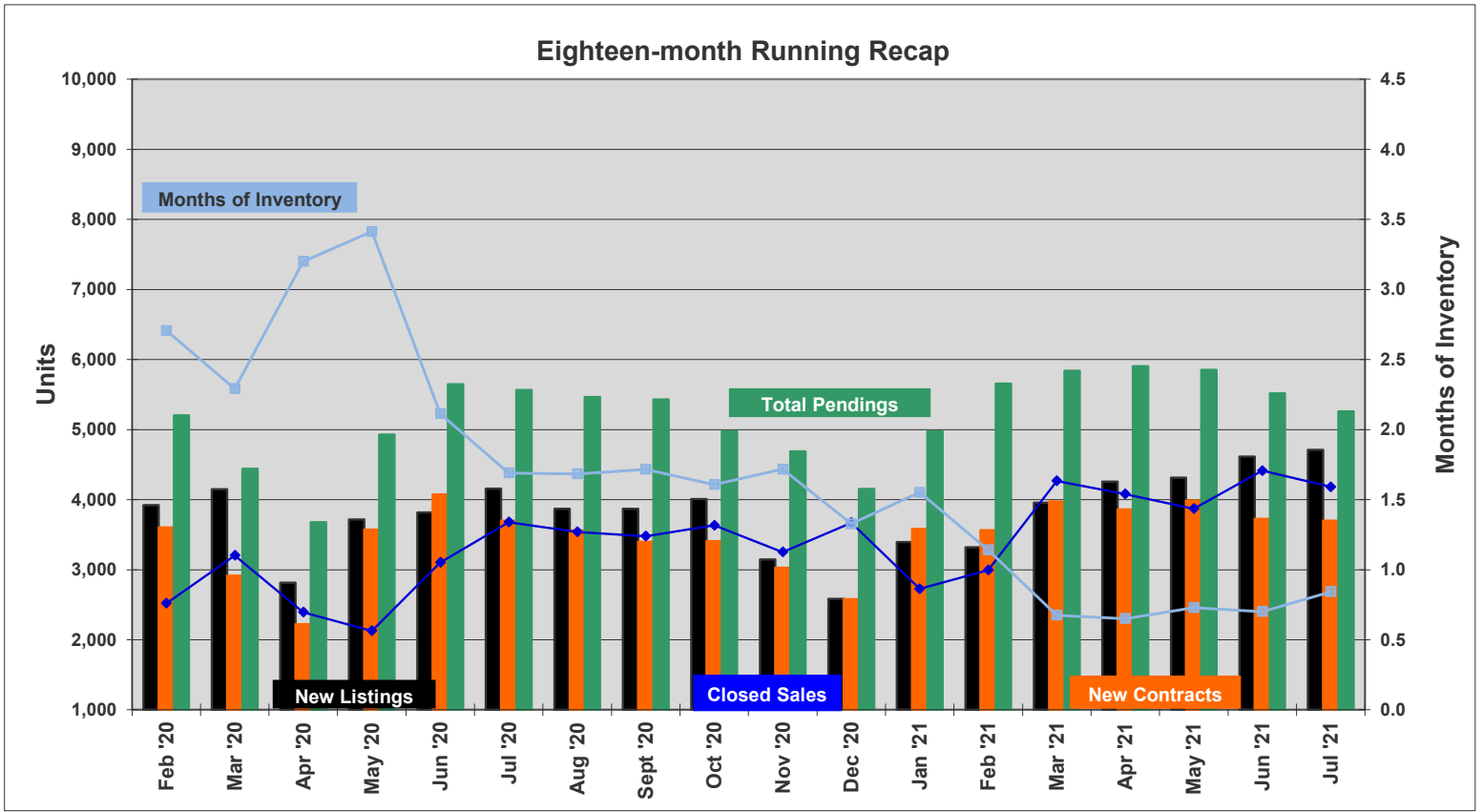




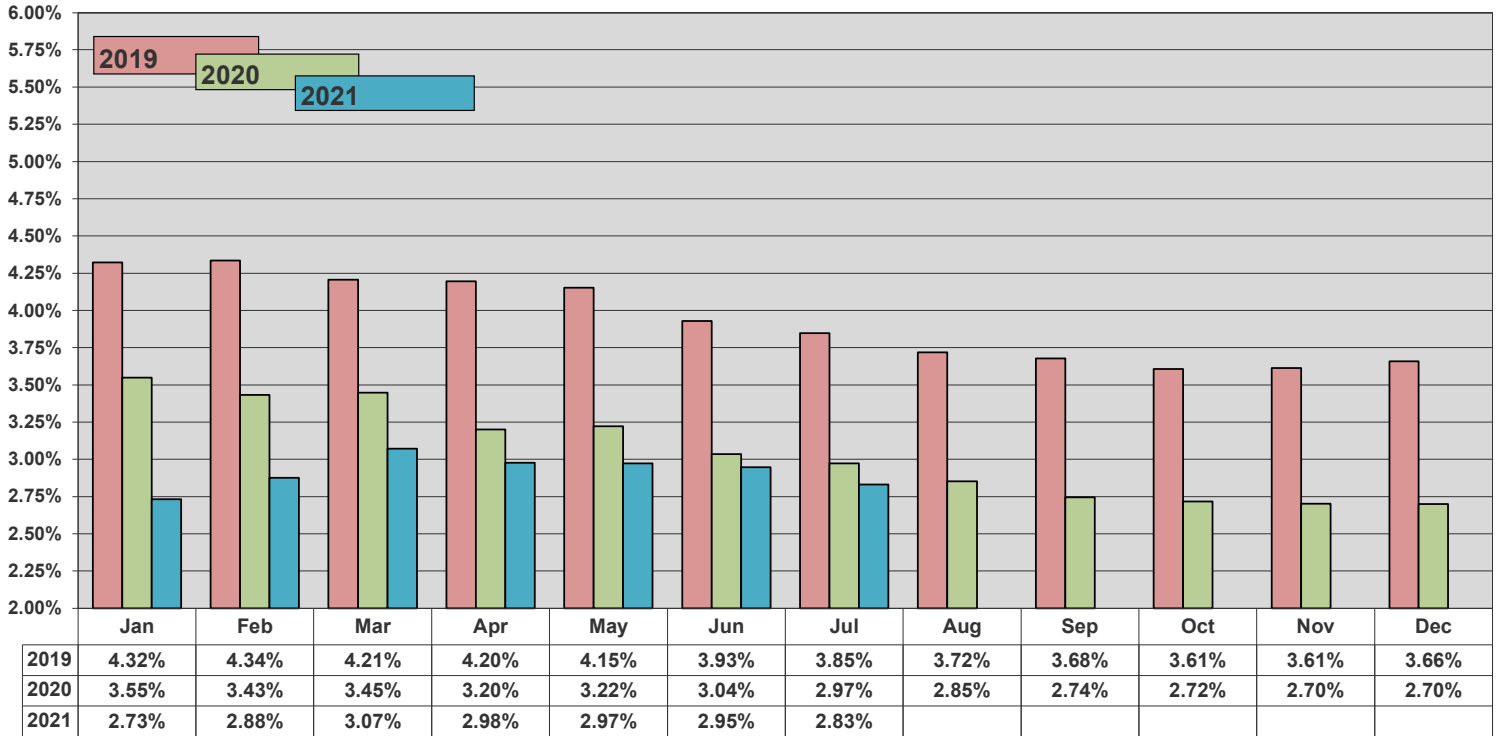
ORRA Originated Sales	Average Mtg Rate	Inventory				New Listings	New Contracts	Under Contract	Back on Market	Expired	Withdrawn	Sales Closed	Days on Market
		Total	Single Family Homes	Condos	Townhomes/ Villas								
Feb '20	3.43%	6,825	5,136	1,086	603	3,924	3,604	5,204	552	187	623	2,521	58
Mar '20	3.45%	7,341	5,499	1,162	680	4,150	2,914	4,439	953	136	743	3,204	54
Apr '20	3.20%	7,659	5,656	1,237	766	2,814	2,224	3,679	726	206	707	2,393	47
May '20	3.22%	7,260	5,207	1,264	789	3,717	3,572	4,930	683	230	644	2,127	48
Jun '20	3.04%	6,557	4,605	1,207	745	3,816	4,077	5,647	653	212	664	3,103	52
Jul '20	<b>2.97%</b>	<b>6,220</b>	<b>4,219</b>	<b>1,242</b>	<b>759</b>	<b>4,156</b>	<b>3,702</b>	<b>5,564</b>	<b>568</b>	<b>202</b>	<b>698</b>	<b>3,679</b>	<b>54</b>
Aug '20	2.85%	5,958	3,957	1,258	743	3,869	3,560	5,467	442	176	668	3,539	51
Sept '20	2.74%	5,972	3,986	1,240	746	3,870	3,400	5,429	548	190	597	3,478	48
Oct '20	2.72%	5,840	3,880	1,211	749	4,009	3,409	4,977	452	135	564	3,634	48
Nov '20	2.70%	5,583	3,592	1,261	730	3,145	3,031	4,688	414	116	517	3,251	44
Dec '20	2.70%	4,875	3,113	1,132	630	2,584	2,582	4,153	433	281	150	3,672	45
Jan '21	2.73%	4,233	2,592	1,087	554	3,394	3,582	4,979	282	152	644	2,727	49
Feb '21	2.88%	3,420	2,063	951	406	3,322	3,564	5,657	242	104	427	2,995	52
Mar '21	3.07%	2,878	1,814	762	302	3,959	3,973	5,839	264	107	456	4,268	48
Apr '21	2.98%	2,655	1,752	674	229	4,258	3,863	5,904	302	80	466	4,081	42
May '21	2.97%	2,822	1,983	613	226	4,315	3,988	5,852	306	79	423	3,872	36
Jun '21	2.95%	3,098	2,286	527	285	4,617	3,728	5,519	336	73	432	4,414	29
Jul '21	<b>2.83%</b>	<b>3,524</b>	<b>2,610</b>	<b>585</b>	<b>329</b>	<b>4,710</b>	<b>3,700</b>	<b>5,260</b>	<b>433</b>	<b>83</b>	<b>462</b>	<b>4,183</b>	<b>26</b>
ORRA Originated Sales	Average Mtg Rate	Total	Single Family Homes	Condos	Townhomes/ Villas	New Listings	New Contracts	Under Contract	Back on Market	Expired	Withdrawn	Sales Closed	Days on Market

Complete stats and data may be found under Market Info at [www.orlandorealtors.org](http://www.orlandorealtors.org). Comments or suggestions? Contact Mike Blinn, Statistician.

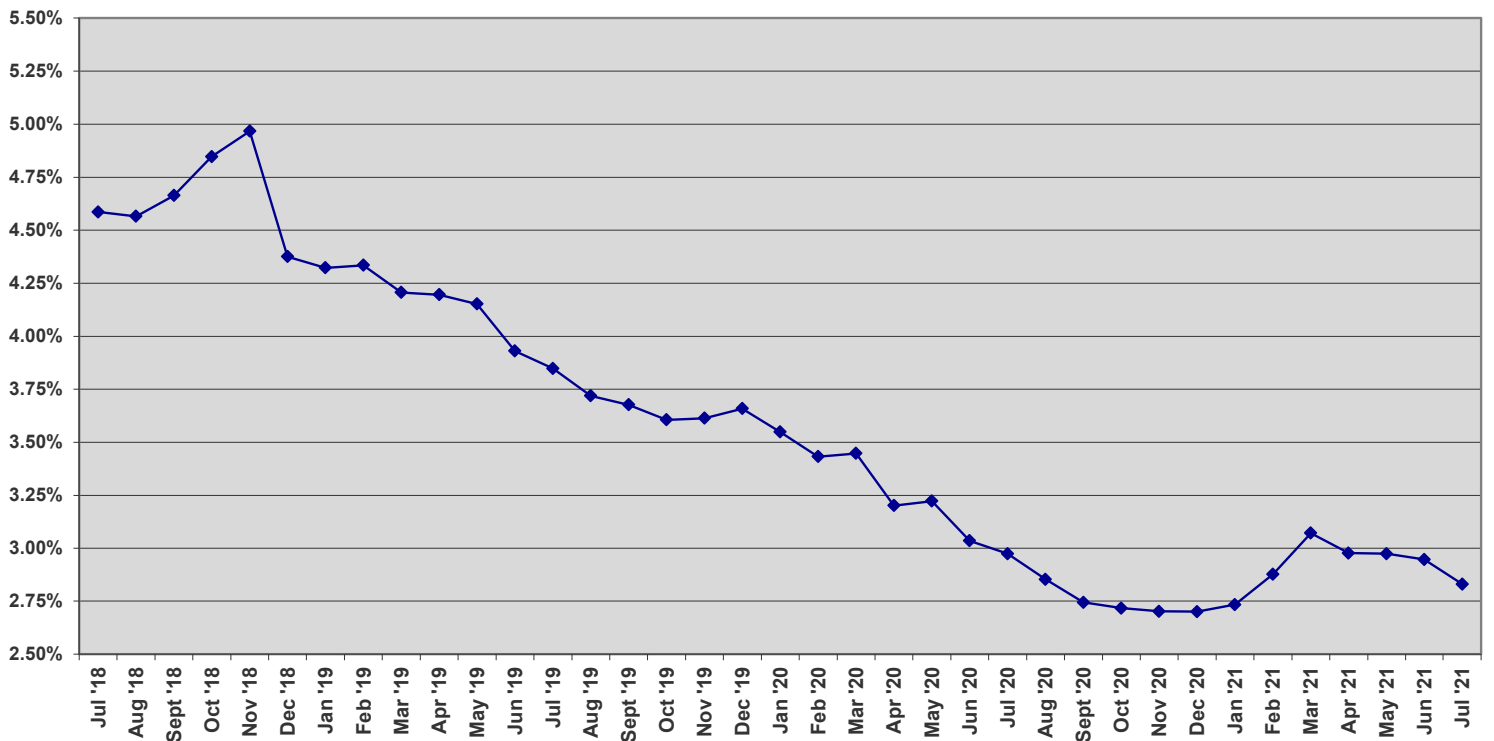
Market Pulse™ data represents all listings taken or sold by ORRA brokers, regardless of location and is exclusive to residential property, which includes townhomes, duplexes, single-family homes, and condos. It does not include vacant land or commercial transactions.



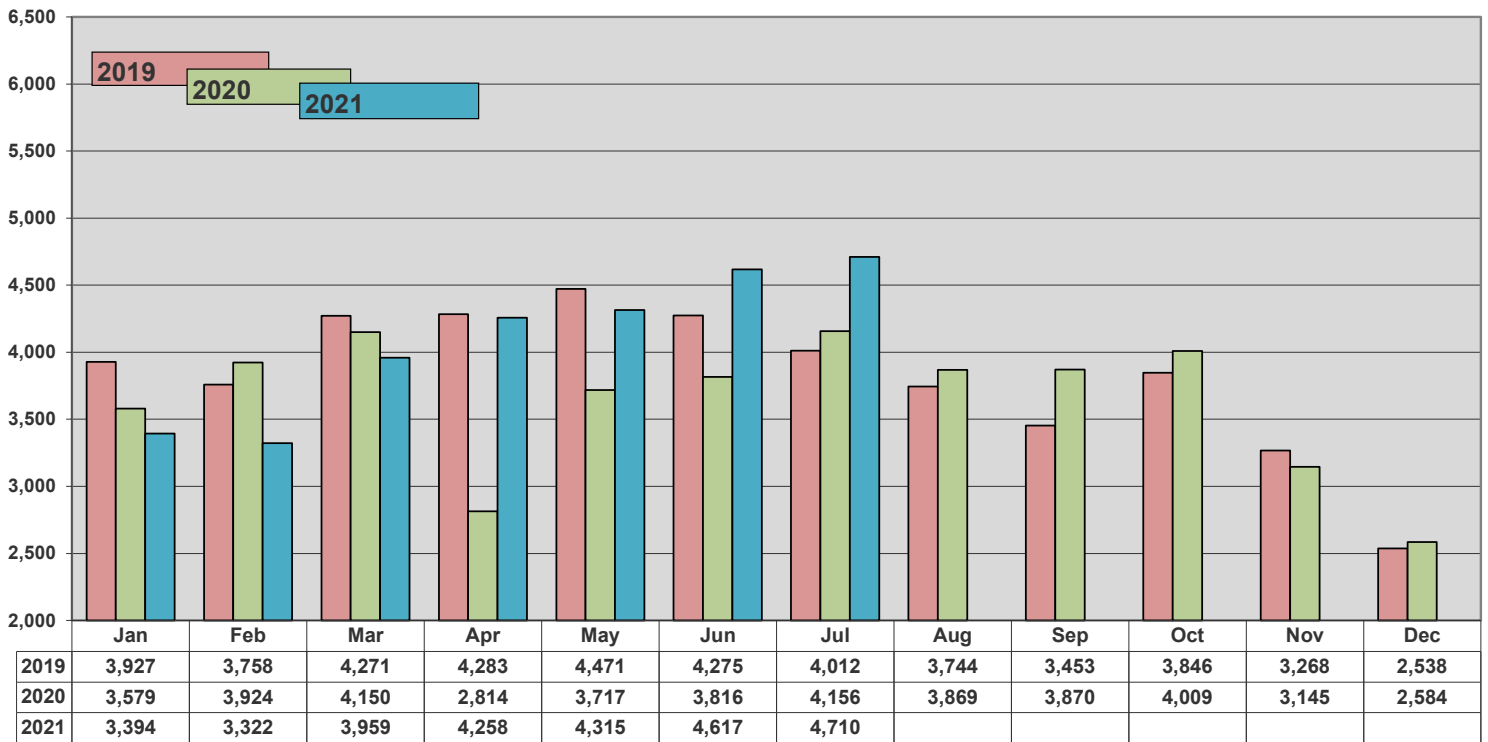
### Average Monthly Mortgage Rate



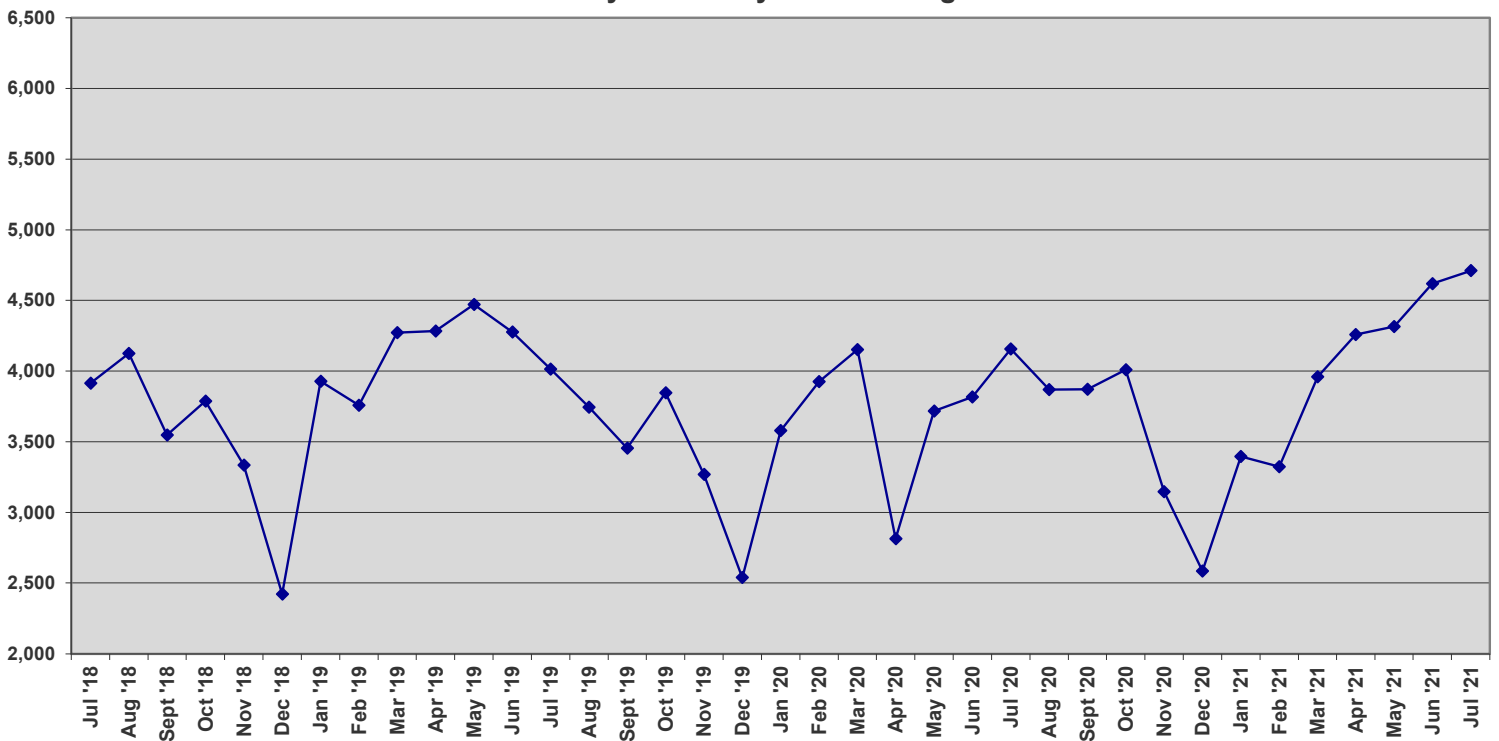
### Three-year History - Average Monthly Mortgage Rate



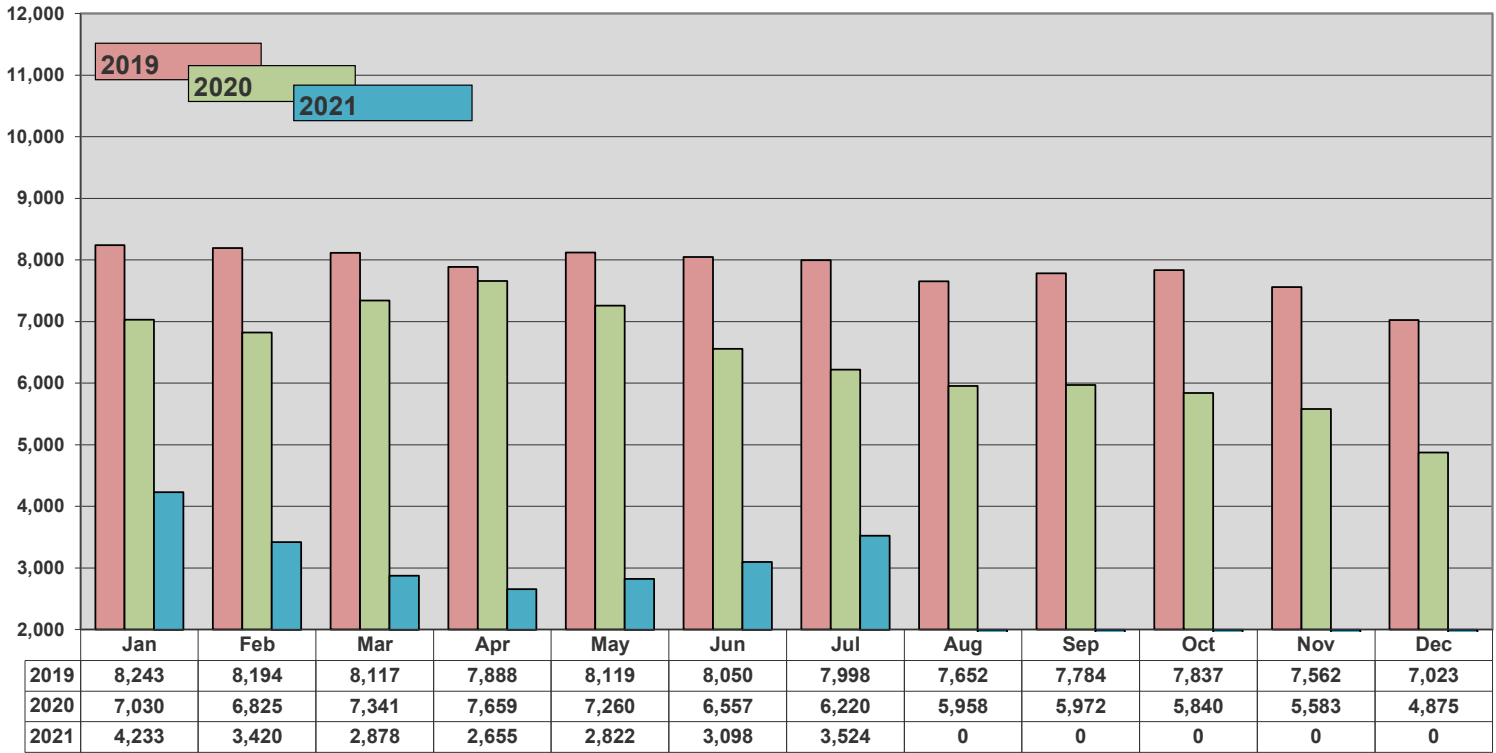
### New Listings



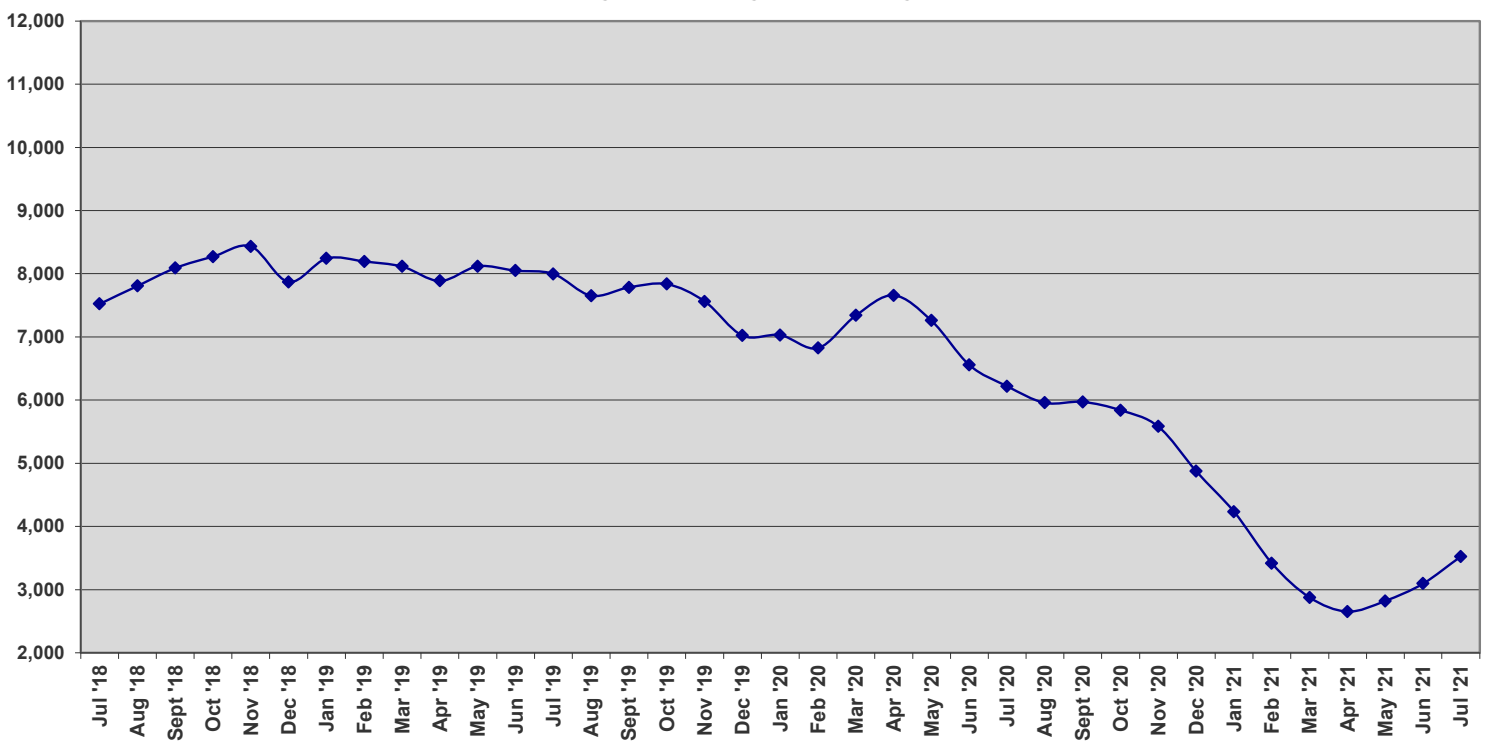
### Three-year History - New Listings



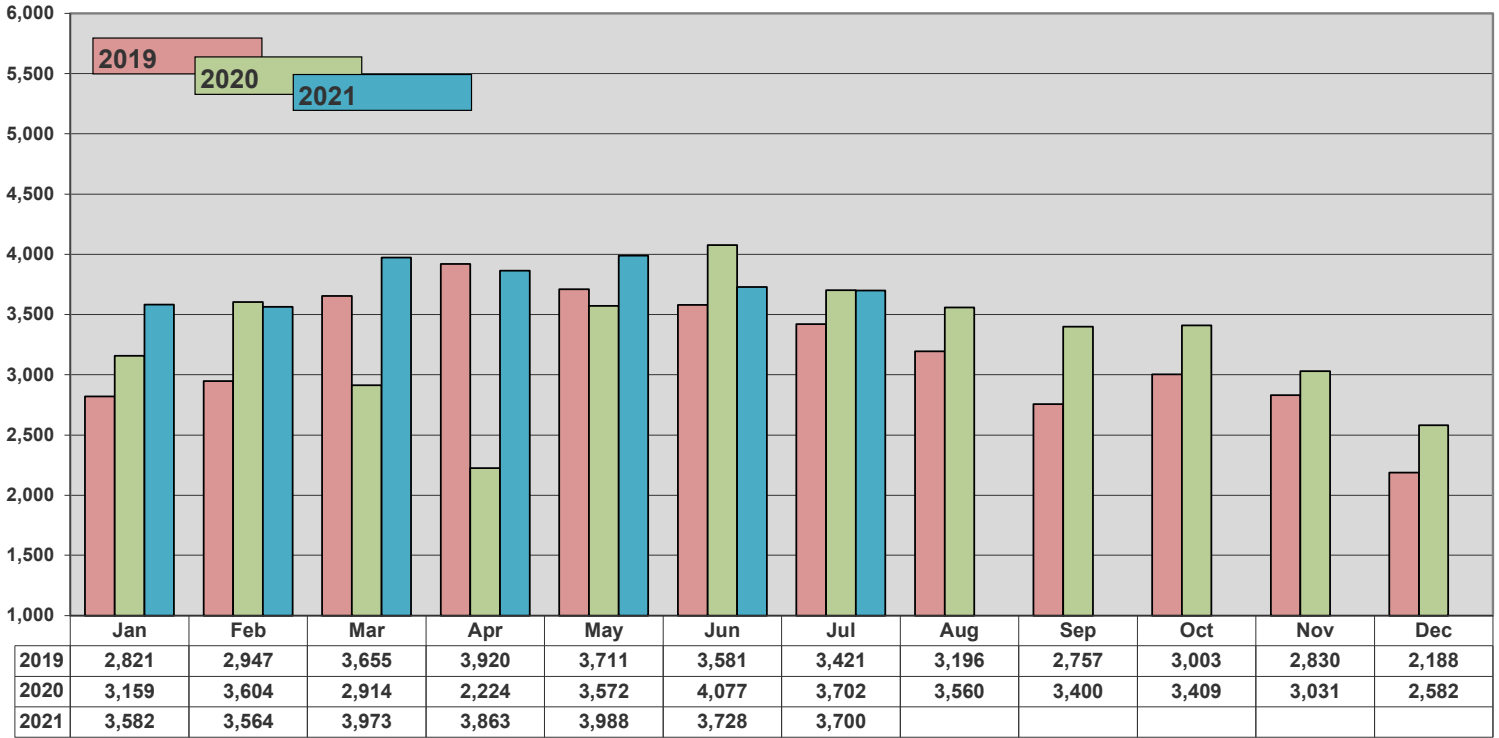
### Inventory



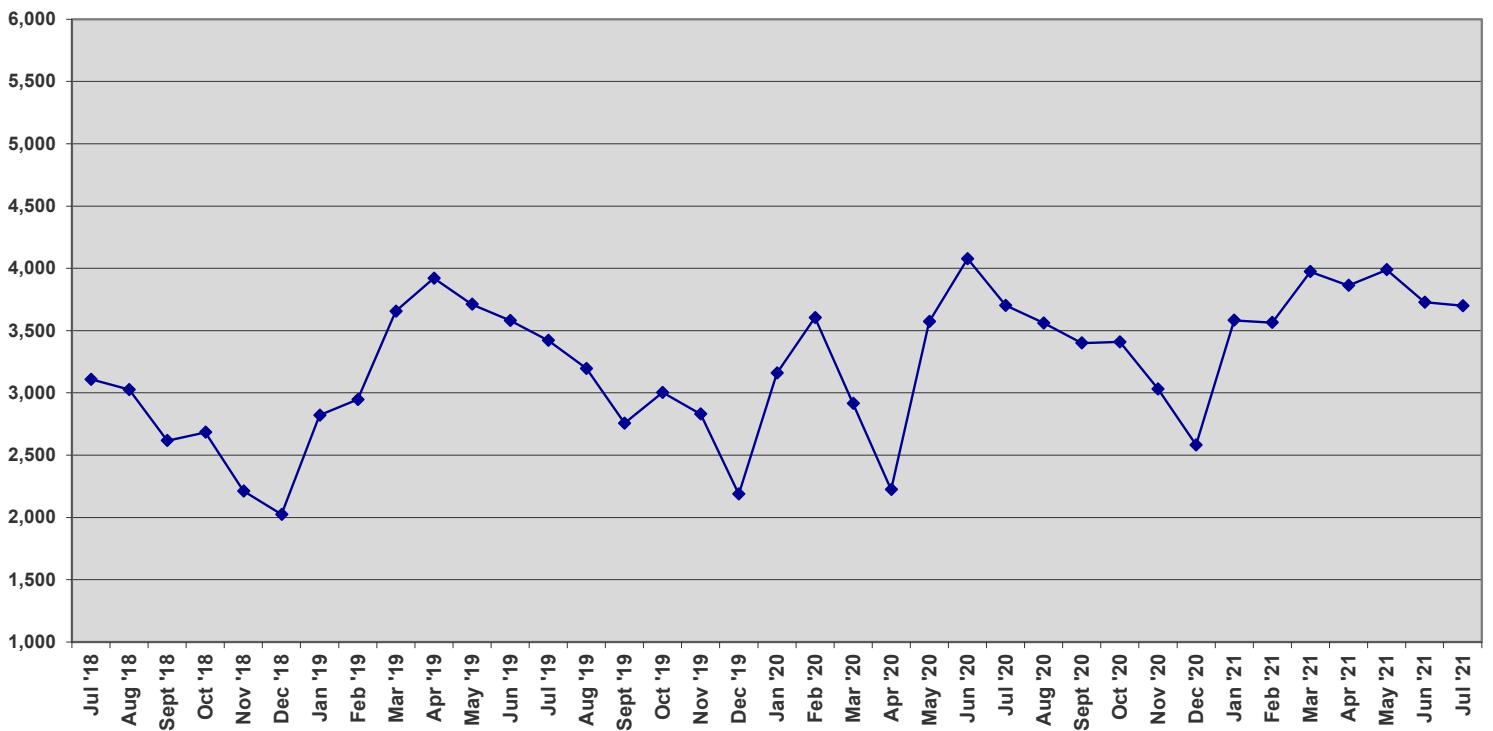
### Three-year History - Inventory

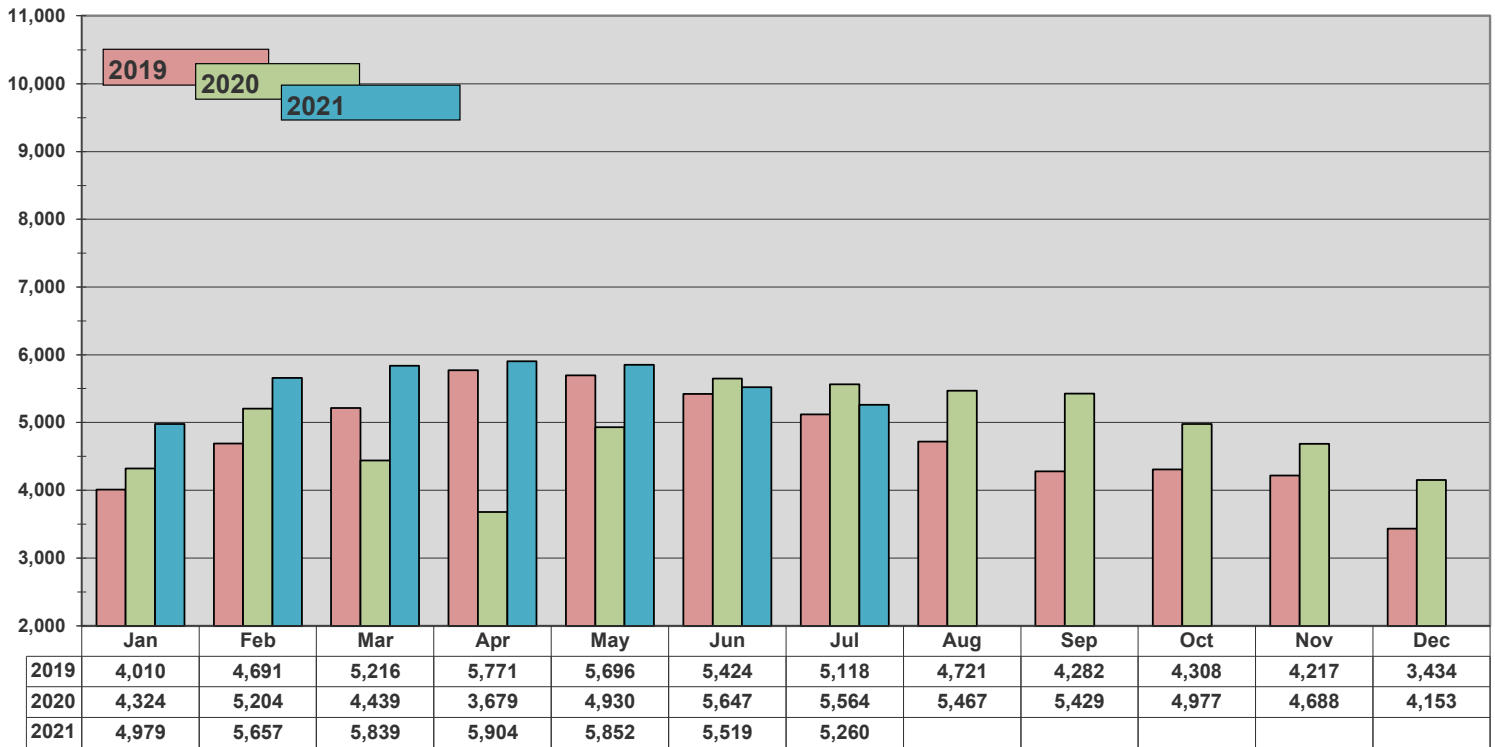
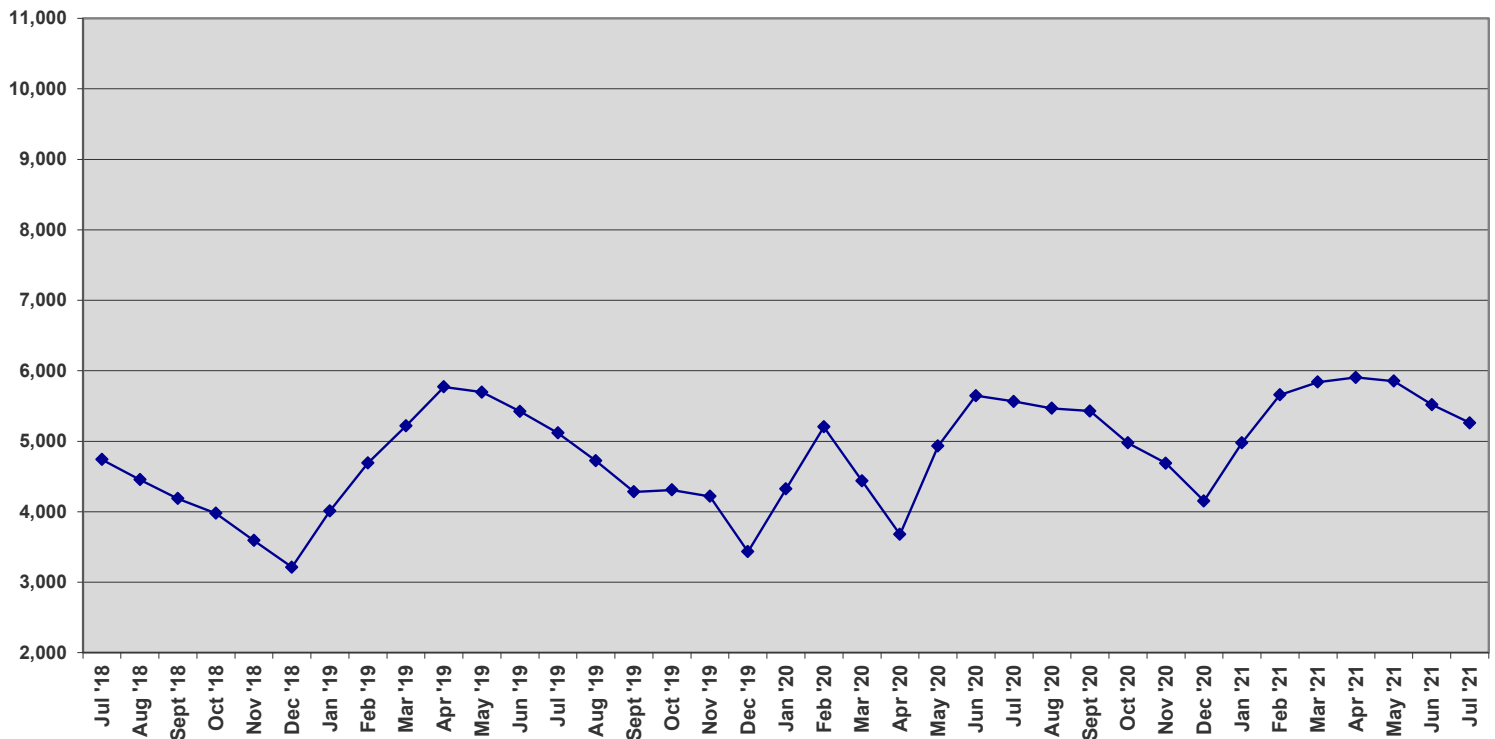


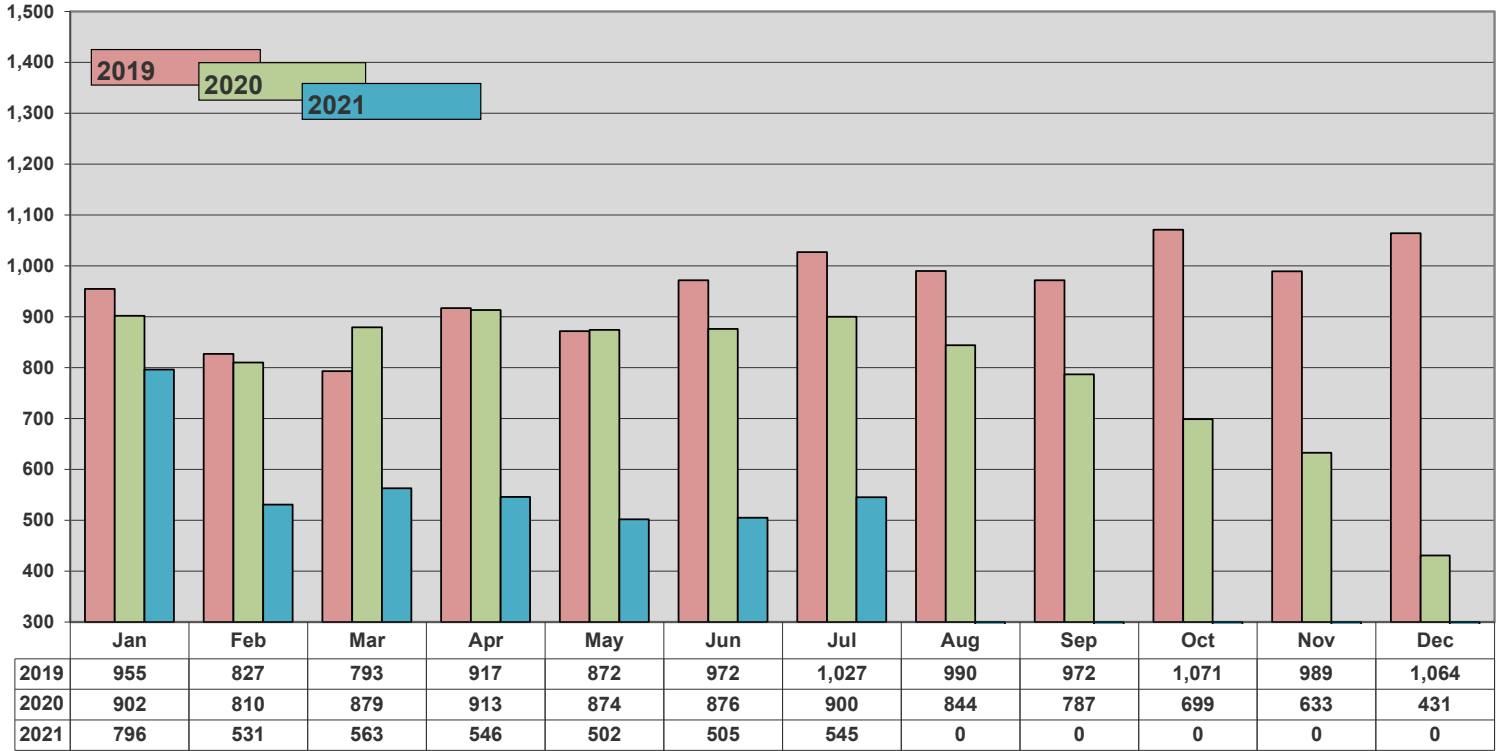
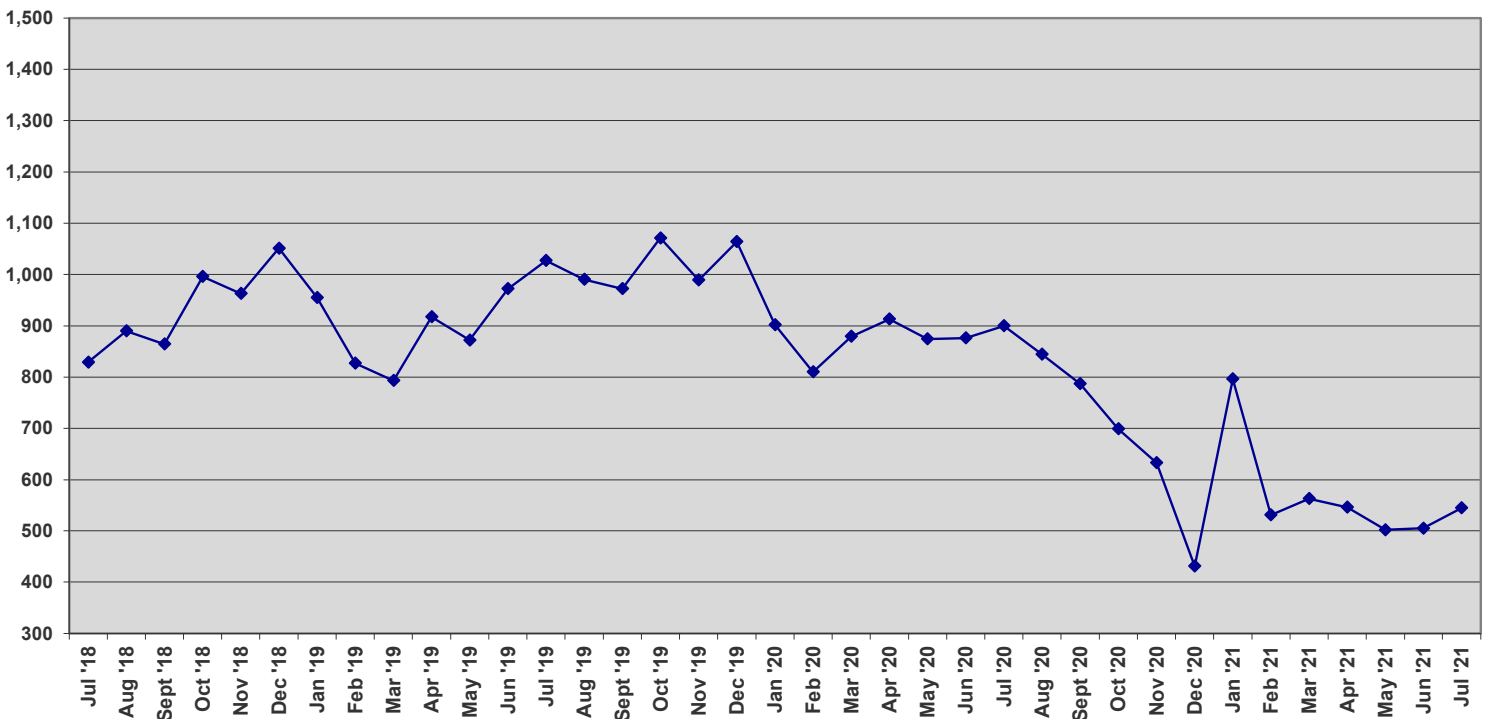
### New Contracts



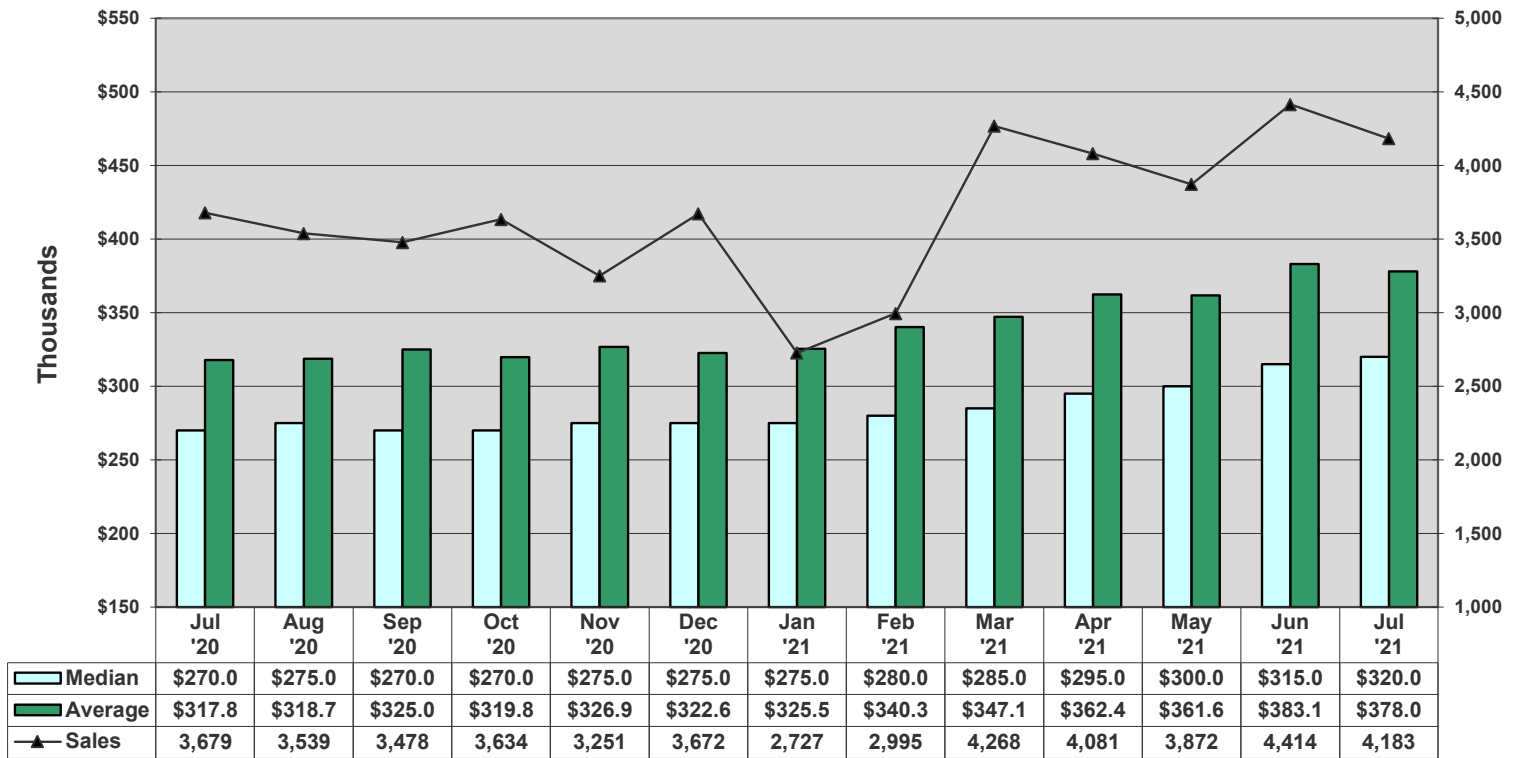
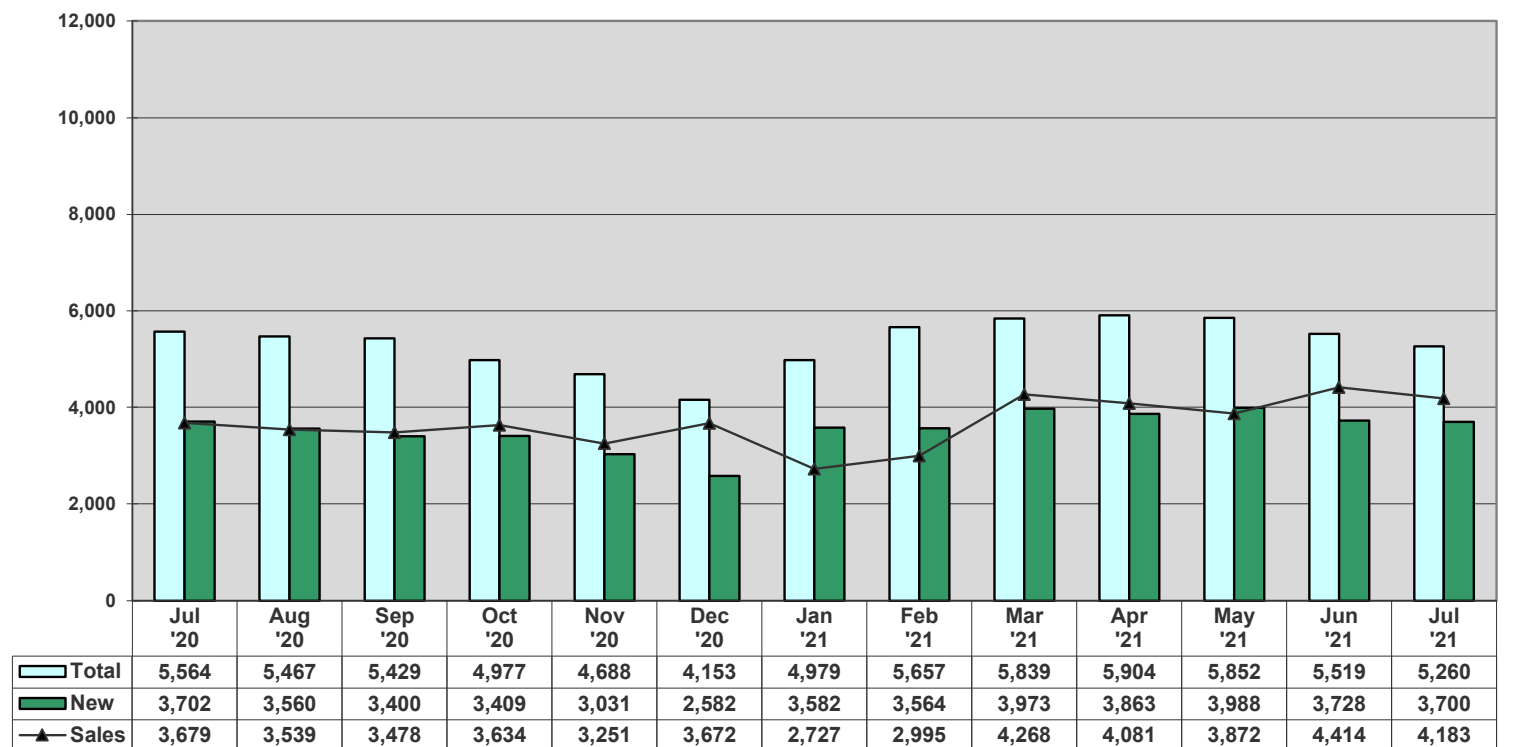
### Three-year History - New Contracts

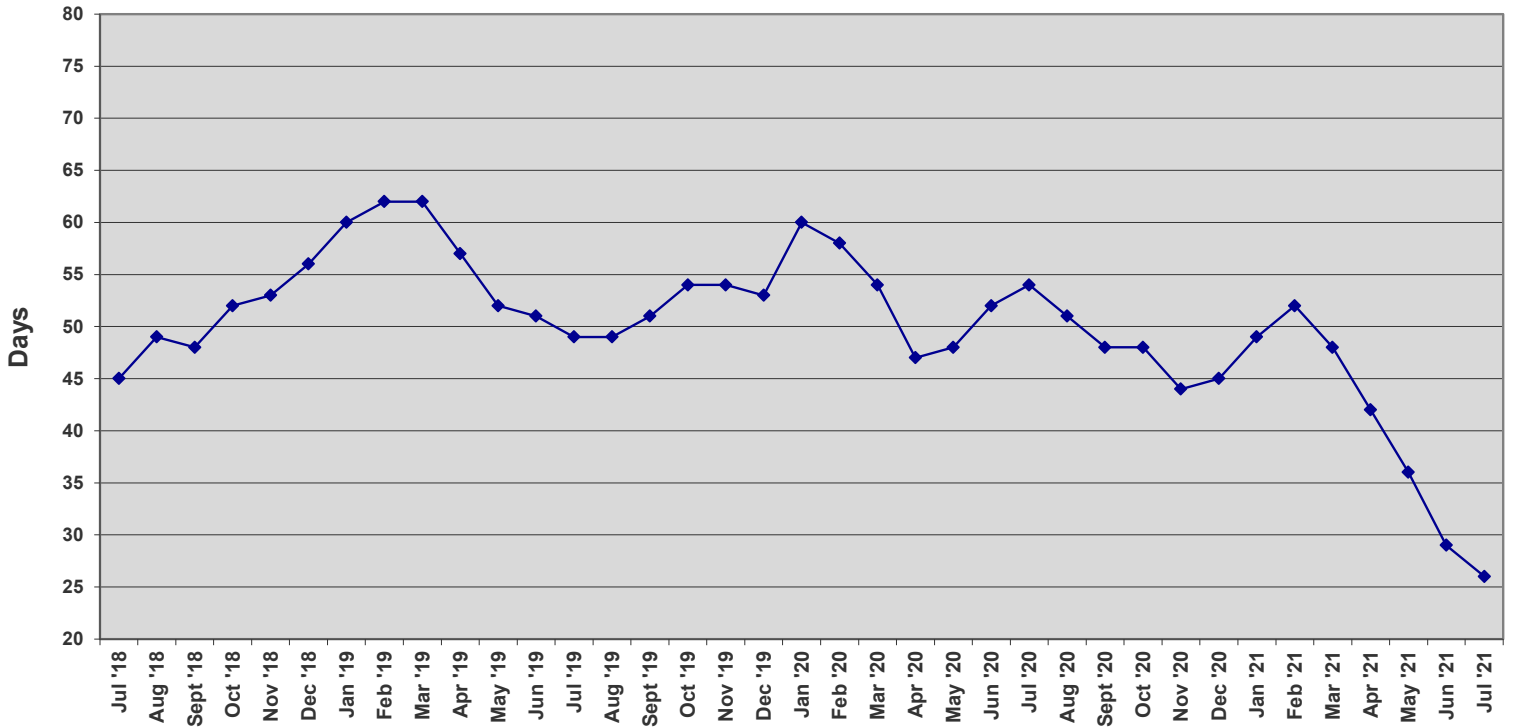


**Total Under Contract**

**Three-year History - Monthly Total Under Contract**


**Units off the Market - Withdrawn or Expired**

**Three-year History - Units off the Market - Withdrawn or Expired**




**Average vs Median Sales Price vs Sales**

**Total Contracts vs New Contracts vs Sales**


**Average Days on Market - Listing to Contract**

**Average Days - Contract to Close**
