



# West Edmonton: A Complete Guide

Compliments of...



# Introduction

This eBook is set up in four parts. The first is for zones 10, 11, & 22. Please see the table of contents for these communities on [page 3](#).

The second part of this eBook includes zone 20. Please see the table of contents for these communities on [page 20](#).

The third part of this eBook includes zones 57, 58 & 59. Please see the table of contents for these communities on [page 37](#).

The fourth part of this eBook includes zone 58. Please see the table of contents for these communities on [page 49](#).

Each part has their designated amenities after the TOC with all schools listed at the end of this book, starting on [page 56](#).



## Zones – 10, 11 & 22 West Central

<b>Crestwood</b>	5
<b>Glenora</b>	6
<b>Glenwood</b>	7
<b>Jasper Park</b>	8
<b>Lynnwood</b>	9
<b>Meadowlark Park</b>	10
<b>Oleskiw</b>	11
<b>Parkview</b>	12
<b>Patricia Heights</b>	13
<b>Quesnell Heights</b>	14
<b>Rio Terrace</b>	15
<b>Sherwood</b>	16
<b>West Jasper Place</b>	17
<b>West Meadowlark Park</b>	18
<b>Westridge</b>	19
<b>Zone 20 - West Edmonton</b>	20

## Zones – 10, 11 & 22 – Amenities

### SHOPPING VENUES AND SERVICES

Edmonton City Centre  
Kingsway Mall  
West Edmonton Mall  
Westmount Centre

### RECREATION CENTRES

Central Lions Recreation Centre  
Jasper Place Fitness and Leisure Centre  
Kinsmen Sports Centre  
MacEwan University Sport and Wellness Centre  
Peter Hemingway Fitness and Leisure Centre

### POPULAR PARKS AND GOLF COURSES

Buena Vista Park  
Callingwood Park  
Emily Murphy Park  
Government House Park  
Hawrelak Park  
Sir Wilfrid Laurier Park  
Terwillegar Park  
Victoria Park  
Whitemud Park  
Edmonton Country Club  
Kinsmen Pitch and Putt  
Lewis Estates Golf Course  
Riverside Golf Course  
Royal Mayfair Golf Club  
Victoria Golf Course

### LOCAL SCHOOLS

To see the complete list of Northwest Edmonton public and Catholic schools [click here](#).

## Crestwood

A nature lover's delight, Crestwood is defined by both MacKinnon Ravine Park to the north and the North Saskatchewan River Valley to the east. Home to Edmonton's famous Candy Cane Lane, this family-friendly neighbourhood features two local schools as well as several nearby shops, services, restaurants, commuter roads (149th Street, Stony Plain Road) and much more. The area consists mainly of single-family homes, many of which were built during the 1950s and have since been updated.

### Designated Schools:

#### *Public:*

Crestwood School, Elementary, Junior High  
Ross Sheppard School, Senior High

#### *Catholic:*

Our Lady of Peace, Pre-Kindergarten,  
Elementary  
St. Paul, Elementary  
St. Rose, Junior High  
St. Francis Xavier, Senior High



## Glenora

One of Edmonton's many historical neighbourhoods, Glenora was once a section of land belonging to farmer Malcolm Groat, for whom Groat Road is named. Now an established community defined by mature trees, older (updated) single-family dwellings and the North Saskatchewan River, Glenora is a popular choice among buyers looking for a unique place to call home. The area is also extremely amenity friendly as it hosts four schools, ample parks and green space, as well as several shops and services along bisecting Stony Plain Road.

### Designated Schools:

#### *Public:*

Glenora School, Elementary  
Westminster School, Junior High  
Ross Sheppard School, Senior High

#### *Catholic:*

St. Vincent, Pre-Kindergarten, Elementary  
St. Mark, Junior High  
St. Joseph, Senior High

## Glenwood

Looking for a neighbourhood that has it all (and then some)? Look no further than glorious Glenwood! Bounded by 170th Street to the west, Stony Plain Road to the North, 156th Street to the east and 95th Ave to the south, the area boasts the best shops, services, restaurants and entertainment venues Edmonton has to offer (including West Edmonton Mall). The community also provides buyers with a diverse range of home styles that include single-family dwellings, apartment-style condos and duplexes - all of which are anchored by several local schools, parks and open green spaces.

### Designated Schools:

#### *Public:*

Glendale School, Elementary, Junior High  
Westlawn School, Junior High  
Jasper Place School, Senior High

#### *Catholic:*

Our Lady of Peace, Pre-Kindergarten,  
Elementary  
Annunciation, Elementary  
St. Thomas More, Junior High  
St. Francis Xavier, Senior High



## Jasper Park

Once one of many west Edmonton communities to form the Town of Jasper Place, Jasper Park is an established neighbourhood consisting of single-family homes and apartment-style condos. The area is home to a centrally located park, active community league and three schools. It also features convenient access to nearby amenities (shops, services, dining and more) along bordering 156th and 149th Street.

### Designated Schools:

#### *Public:*

James Gibbons School, Elementary  
Parkview School, Elementary, Junior High  
Jasper Place School, Senior High

#### *Catholic:*

Our Lady of Victories, Pre-Kindergarten, Elementary  
St. Paul, Elementary  
St. Thomas More, Junior High  
St. Francis Xavier, Senior High

## Lynnwood

Lynnwood is a west Edmonton community bounded by 159th Street to the west, 87th Ave to the north, 149th Street to the east and Whitemud Drive to the south. Real estate in the area caters to a wide range of lifestyles and budgets, featuring both single-family homes and walk-up apartment-style condos. Residents here also benefit from two local schools as well as convenient access to shops, services and other commercial amenities located to the immediate northwest.

### Designated Schools:

#### *Public:*

Lynwood School, Elementary  
 Parkview School, Elementary, Junior High  
 Jasper Place School, Senior High

#### *Catholic:*

Our Lady of Victories, Pre-Kindergarten,  
 Elementary  
 H.E. Beriault, Junior High  
 Blessed Oscar Romero, Senior High



## Meadowlark Park

Formerly part of the Town of Jasper Place, Meadowlark Park merged with the greater City of Edmonton in the early 1960s. As a mature community, the area is home to a variety of (updated) older single-family homes but also includes several modern condo developments. Ripe with amenities, Meadowlark houses a large shopping district as well as a local school, public library, fitness and leisure centre, sports park and several accessible commuter roads.

### Designated Schools:

#### *Public:*

Meadowlark School, Elementary  
Hillcrest School, Junior High  
Jasper Place School, Senior High

#### *Catholic:*

Our Lady of Victories, Pre-Kindergarten, Elementary  
Annunciation, Elementary  
St. Thomas More, Junior High  
St. Francis Xavier, Senior High

## Oleskiw

Scenic and serene, Oleskiw is a nature-friendly community overlooking both the North Saskatchewan River Valley and the Edmonton Country Club golf course. Characterized by single-family homes and quiet cul-de-sacs, the neighbourhood is ideal for families looking for a peaceful place to call home. Other great amenities include schools, shops, services, restaurants and more, all of which are easily accessible via nearby 170th Street and Whitemud Drive.

### Designated Schools:

#### *Public:*

Patricia Heights School, Elementary  
Hillcrest School, Junior High  
Jasper Place School, Senior High

#### *Catholic:*

Our Lady of Victories, Pre-Kindergarten,  
Elementary  
H.E. Beriault, Junior High  
Blessed Oscar Romero, Senior High



## Parkview

An established neighbourhood featuring both older (updated) character homes and eye-catching infill, Parkview is comprised solely of single-family dwellings. Furthermore, the entire eastern border of the community overlooks the North Saskatchewan River Valley, making it a highly desirable neighbourhood among buyers looking for a great view. Amenities within the area consist of two local schools, a convenient shopping district and an active community league. Nearby 142nd Street and 87th Ave also provide swift access to a variety of other desirable shops and services.

### Designated Schools:

#### *Public:*

Parkview School, Elementary, Junior High  
Ross Sheppard School, Senior High

#### *Catholic:*

Our Lady of Victories, Pre-Kindergarten, Elementary  
St. Paul, Elementary  
St. Rose, Junior High  
St. Francis Xavier, Senior High

## Patricia Heights

Patricia Heights is a triangle-shaped community known for its convenient location (just south of the Whitemud) and scenic ravine views. As walking trails and open green spaces define the neighbourhood's entire southern edge, nature lovers find Patricia Heights a great place to call home. Real estate in the area is a near-even blend of both single-family homes and low/medium-rise apartment condos. Local amenities include a K-6 public school as well as proximity to shops and services in the surrounding neighbourhoods.

### Designated Schools:

#### *Public:*

Patricia Heights School, Elementary  
Hillcrest School, Junior High  
Jasper Place School, Senior High

#### *Catholic:*

Our Lady of Victories, Pre-Kindergarten,  
Elementary  
H.E. Beriault, Junior High  
Blessed Oscar Romero, Senior High



## Quesnell Heights

Featuring approximately 118 single-family homes (only), Quesnell Heights is the smallest community in Edmonton. But despite its size, this quaint neighbourhood still has plenty to offer current and future residents – including beautiful River Valley views, and swift access to Whitemud Drive. It's convenient location also makes it extremely easy to access all nearby amenities within moments, including schools, shops, services, restaurants and much more.

### Designated Schools:

#### *Public:*

Patricia Heights School, Elementary

Laurier Heights School, Elementary, Junior High

Jasper Place School, Senior High

#### *Catholic:*

Our Lady of Victories, Pre-Kindergarten, Elementary

H.E. Beriault, Junior High

Blessed Oscar Romero, Senior High

## Rio Terrace

Like many west Edmonton communities, Rio Terrace is known for its accessible amenities and panoramic views. Extremely family-friendly, the neighbourhood is home to a variety of older and newer single-family homes (many of which overlook the River Valley and Fort Edmonton Park) as well as a local K-6 school. Additional schools, shopping and services sit close by in the surrounding communities, all of which are readily accessible via bordering Whitemud Drive.

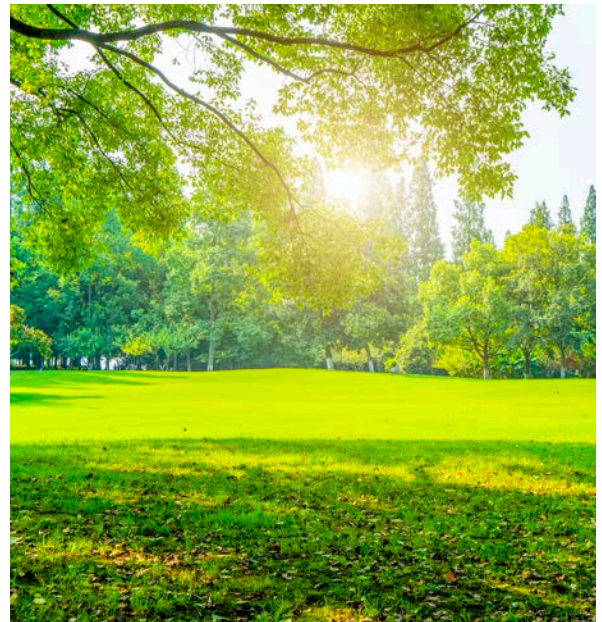
### Designated Schools:

#### *Public:*

Patricia Heights School, Elementary  
 Laurier Heights School, Elementary, Junior High  
 Jasper Place School, Senior High

#### *Catholic:*

Our Lady of Victories, Pre-Kindergarten, Elementary  
 H.E. Beriault, Junior High  
 Blessed Oscar Romero, Senior High



## Sherwood

Sherwood is bounded by 156th Street to the west, 95th Ave to the north, 149th Street to the east and 92nd Ave to the south. Real estate in the area consists of single-family homes (both older, updated units and modern infill) as well as duplexes and apartment-style condos. The community sits just a short distance from West Edmonton Mall, the Jasper Place Fitness and Leisure Centre and the North Saskatchewan River Valley. Schools and other services can be found close by in the neighbouring areas.

### Designated Schools:

#### *Public:*

Sherwood School, Elementary  
Westlawn School, Junior High  
Jasper Place School, Senior High

#### *Catholic:*

Our Lady of Victories, Pre-Kindergarten, Elementary  
Annunciation, Elementary  
St. Paul, Elementary  
St. Thomas More, Junior High  
St. Francis Xavier, Senior High

## West Jasper Place

An all-in-one community with a wide range of real estate choices and amenities, West Jasper Place has something to offer everyone. Homes in the area consist of apartment-style condos, single-family units and duplexes, all of which range in style and price point. The area also features a large shopping district towards its upper northeast corner (featuring several restaurants, shops and services) as well as a local school and an active community league.

### Designated Schools:

#### *Public:*

Sherwood School, Elementary  
Westlawn School, Junior High  
Jasper Place School, Senior High

#### *Catholic:*

St. Justin, Pre-Kindergarten, Elementary  
St. Benedict, Elementary  
St. Thomas More, Junior High  
St. Francis Xavier, Senior High



## West Meadowlark Park

West Meadowlark Park is defined by 170th Street to the west, 95th Ave to the north, 163rd Street to the east and 87th Ave to the south. It's also a popular neighbourhood among avid shoppers and recreation enthusiasts as it houses a large leisure centre and sits within walking distance of West Edmonton Mall. Real estate in the area is also diverse, consisting of single-family homes, apartment-style condos, townhomes and duplexes. Here too, residents benefit from four local schools as well as the nearby Misericordia Hospital.

### Designated Schools:

#### *Public:*

Afton School, Elementary  
Westbrook School, Elementary  
Westlawn School, Junior High  
Jasper Place School, Senior High

#### *Catholic:*

Our Lady of Victories, Pre-Kindergarten, Elementary  
Annunciation, Elementary  
St. Thomas More, Junior High  
St. Francis Xavier, Senior High

## Westridge

A unique neighbourhood surrounded by open green space, parks, pathways and recreation areas, Westridge is comprised mainly of single-family homes with a few townhome options. Tucked away just south of Whitemud Drive and bordered by 170th Street, Westridge residents enjoy convenient access to all amenities - including schools, shops, services and the highly popular West Edmonton Mall.

### Designated Schools:

#### *Public:*

Patricia Heights School, Elementary  
Hillcrest School, Junior High  
Jasper Place School, Senior High

#### *Catholic:*

Our Lady of Victories, Pre-Kindergarten,  
Elementary  
H.E. Beriault, Junior High  
Blessed Oscar Romero, Senior High



## Zone 20 - West Edmonton

<b>Aldergrove</b>	22
<b>Belmead</b>	23
<b>Callingwood</b>	24
<b>Cameron Heights</b>	25
<b>Dechene</b>	26
<b>Donsdale</b>	27
<b>Gariepy</b>	28
<b>Jamieson Place</b>	29
<b>La Perle</b>	30
<b>Lymburn</b>	31
<b>Ormsby Place</b>	32
<b>Summerlea</b>	33
<b>Terra Rosa</b>	34
<b>Thorncliffe</b>	35
<b>Wedgewood Heights</b>	36
<b>Zones - 57, 58 &amp; 59 - West Anthony Henday</b>	37

## Zone 20 – Amenities

### SHOPPING VENUES AND SERVICES

Currents of Windermere  
The Marketplace at Callingwood  
West Edmonton Mall

### RECREATION CENTRES

Jamie Platz Family YMCA  
Jasper Place Fitness and Leisure Centre  
Peter Hemingway Fitness and Leisure  
Centre  
Terwillegar Community Recreation  
Centre

### POPULAR PARKS AND GOLF COURSES

Buena Vista Park  
Callingwood Park  
Sir Wilfrid Laurier Park  
Terwillegar Park  
Whitemud Park  
The Derrick Golf and Winter Club  
Edmonton Country Club  
Lewis Estates Golf Course  
The Ranch Golf and Country Club  
River Ridge Golf and Country Club  
Windermere Golf and Country Club

### LOCAL SCHOOLS

To see the complete list of Northwest  
Edmonton public and Catholic schools  
[click here](#).

## Aldergrove

An accessible neighbourhood located at the corner of Whitemud Drive and the west Anthony Henday, Aldergrove is a commuter's dream. Bordering 87th Ave also makes it incredibly easy to access the best amenities west Edmonton has to offer, including West Edmonton Mall and the multitude of other shops and services lining nearby 170th Street. Home styles in the area consist mainly of single-family homes and townhomes, all of which are anchored by a local elementary school, two large parks and an active community league.

### Designated Schools:

#### *Public:*

Aldergrove School, Elementary  
Parkview School, Elementary, Junior High  
Jasper Place School, Senior High

#### *Catholic:*

St. Justin, Pre-Kindergarten, Elementary  
H.E. Beriault, Junior High  
Blessed Oscar Romero, Senior High



## Belmead

Belmead is bounded by the Anthony Henday to the west, 95th Ave to the north, 178th Street to the east and 87th Ave to the south. Thanks to its convenient location, residents in the area have swift access to the greater City of Edmonton as well as shops, services, dining and recreation venues (including West Edmonton Mall). Real estate in the neighbourhood is comprised predominantly of single-family homes and townhomes, but there are a few duplex options to choose from as well.

### Designated Schools:

#### *Public:*

Belmead School, Elementary  
Westlawn School, Junior High  
Jasper Place School, Senior High

#### *Catholic:*

St. Justin, Pre-Kindergarten, Elementary  
St. Benedict, Elementary  
St. Thomas More, Junior High  
St. Francis Xavier, Senior High

## Callingwood

Bisected by 69th Ave, Callingwood is divided into two sections – Callingwood North and South. Both areas are flanked by 178th Street to the west, 170th Street to the east and Whitemud Drive to the north, making the area extremely accessible for residents. While both neighbourhoods are served by a large shopping district (The Market at Callingwood), West Edmonton Mall and a variety of other shops and services sit just a few blocks away. Here too, homeowners appreciate having several schools nearby, as well as a YMCA and a public library all within walking distance. While most home styles in North and South Callingwood are multi-unit structures, there are a few single-family homes to choose from throughout the area.

### Designated Schools:

#### *Public:*

Callingwood School, Pre-Kindergarten,  
Elementary  
Hillcrest School, Junior High  
Jasper Place School, Senior High

#### *Catholic:*

Our Lady of the Prairies, Pre-  
Kindergarten, Elementary  
H.E. Beriault, Junior High  
Blessed Oscar Romero, Senior High



## Cameron Heights

Cameron Heights is a new addition to the west Edmonton area. Although still under development, the neighbourhood is served by amenities in the surrounding communities (including shops, services, restaurants and more), and has plans for a future park and school site. This community has also become a popular choice among homebuyers seeking open spaces and scenic views, thanks to its proximity to three popular Edmonton ravines. Real estate consists of mostly single-family homes with further multi-unit options coming soon.

### Designated Schools:

#### *Public:*

Michael A. Kostek School, Elementary  
S. Bruce Smith School, Junior High  
Jasper Place School, Senior High

#### *Catholic:*

Good Shepherd, Pre-Kindergarten, Elementary  
H.E. Beriault, Junior High  
Blessed Oscar Romero, Senior High

## Dechene

Dechene is a triangle-shaped community bounded by 184th Street to the west, Callingwood Road to the north and Lessard Road to the east. Anchored by a large park site featuring two schools, the neighbourhood is made up almost entirely of detached homes - making it ideal for growing families. Several convenient amenities can be found along Dechene's southern border (including a grocery store, banks, restaurants and medical services) while other shops and services are accessible in the surrounding communities.

### Designated Schools:

#### *Public:*

Centennial School, Elementary  
S. Bruce Smith School, Junior High  
Jasper Place School, Senior High

#### *Catholic:*

Good Shepherd, Pre-Kindergarten,  
Elementary  
H.E. Beriault, Junior High  
Blessed Oscar Romero, Senior High



## Donsdale

Tucked neatly away next to the North Saskatchewan River Valley, is the family-friendly community of Donsdale. Established in the early 2000s, Donsdale is a newer neighbourhood known for its peaceful cul-de-sacs, beautiful single-family homes and scenic views. Nature lovers are also sure to appreciate the central stormwater pond, walking paths and natural creek area that define the community to the south. Other desirable amenities, including schools, shops, services and recreation venues, sit just moments away along Lessard Road.

### Designated Schools:

#### *Public:*

Centennial School, Elementary  
S. Bruce Smith School, Junior High  
Jasper Place School, Senior High

#### *Catholic:*

Good Shepherd, Pre-Kindergarten, Elementary  
H.E. Beriault, Junior High  
Blessed Oscar Romero, Senior High

## Gariepy

An ideal neighbourhood for avid golfers and outdoor lovers alike, Gariepy overlooks both the Edmonton Country Club and the North Saskatchewan River Valley. The community is also suitable for growing families, thanks to its inclusion of a local K-6 school and an active community league (featuring a playschool, sports programs and social events throughout the year). The neighbourhood's convenient location along Lessard Road and Callingwood Drive makes it easy to reach both desirable amenities and other parts of the city in no time at all.

### Designated Schools:

#### *Public:*

Centennial School, Elementary  
S. Bruce Smith School, Junior High  
Jasper Place School, Senior High

#### *Catholic:*

Our Lady of the Prairies, Pre-Kindergarten, Elementary  
H.E. Beriault, Junior High  
Blessed Oscar Romero, Senior High



## Jamieson Place

Jamieson Place is defined by Anthony Henday to the west, Callingwood Road to the north, 184th Street to the east and Lessard Road to the south. Consisting mainly of modern, single-family homes, the neighbourhood features a large central park/school site, plenty of open green space and numerous walking paths. The community also sits just a few minutes south of West Edmonton Mall and benefits from countless other amenities, all located within the surrounding areas.

### Designated Schools:

#### *Public:*

Michael A. Kostek School, Elementary  
S. Bruce Smith School, Junior High  
Jasper Place School, Senior High

#### *Catholic:*

Good Shepherd, Pre-Kindergarten, Elementary  
H.E. Beriault, Junior High  
Blessed Oscar Romero, Senior High

## La Perle

Real estate in La Perle is a healthy mix of detached and multi-unit housing, including single-family homes, apartment-style condos, townhomes and duplexes. In addition to home styles for every taste and budget, the neighbourhood includes a variety of desirable amenities such as a local school, parks, recreation space, shops, services and access to the Anthony Henday. Not to mention, it's proximity to 170th Street makes getting to both the Terra Rosa Shopping District and West Edmonton Mall a breeze.

### Designated Schools:

#### *Public:*

Laperle School, Elementary  
Westlawn School, Junior High  
Jasper Place School, Senior High

#### *Catholic:*

St. Justin, Pre-Kindergarten, Elementary  
St. Benedict, Elementary  
St. Thomas More, Junior High  
St. Francis Xavier, Senior High



## Lymburn

Located at the corner of west Anthony Henday and Whitemud Drive, Lymburn is a popular choice among Edmontonians looking for an easy commute. Developed throughout the late 1980s and early 90s, the area includes a variety of (updated) single-family homes, apartment-style condos, townhomes and duplexes. Amenities in the area also include two large park and school sites, an active community league, shopping district, YMCA and public library all within walking distance.

### Designated Schools:

#### *Public:*

Lymburn School, Elementary  
Parkview School, Elementary, Junior High  
Jasper Place School, Senior High

#### *Catholic:*

St. Martha, Pre-Kindergarten, Elementary  
H.E. Beriault, Junior High  
Blessed Oscar Romero, Senior High

## Ormsby Place

Ormsby is a well-established community consisting of single-family homes, townhomes, apartment-style condos and duplexes. Several parks, a local K-6 school, shops and services can be found throughout the area, with many other great amenities (a shopping district, West Edmonton Mall and a YMCA) easily accessible in the surrounding neighbourhoods. Ormsby also boasts proximity to both the Whitemud, Anthony Henday and 178th Street, making it easy to get just about anywhere in a hurry.

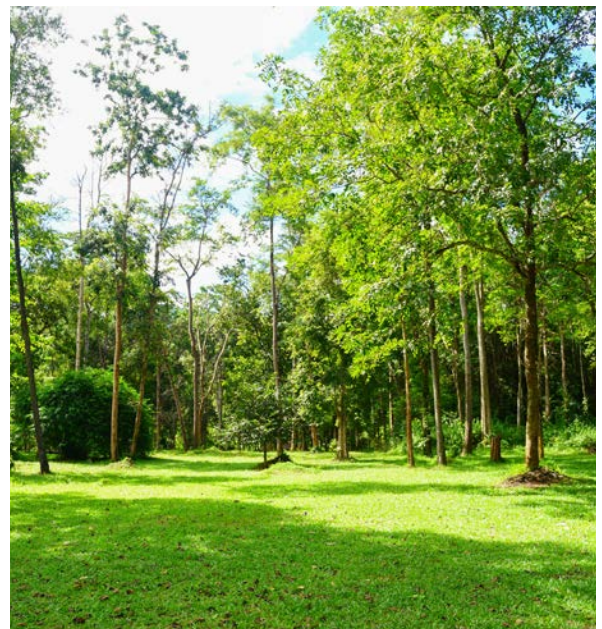
### Designated Schools:

#### *Public:*

Ormsby School, Elementary  
S. Bruce Smith School, Junior High  
Jasper Place School, Senior High

#### *Catholic:*

St. Martha, Pre-Kindergarten, Elementary  
H.E. Beriault, Junior High  
Blessed Oscar Romero, Senior High



## Summerlea

Not only is Summerlea home to a diverse range of real estate options, including single-family homes, townhomes, duplexes and apartment-style condos, it also houses one of Edmonton's most famous tourist attractions: West Edmonton Mall. This means residents enjoy ultra-convenient access to shopping, services, recreation, entertainment, restaurants and more - all just steps from their front door. The area is also extremely commute friendly via both transit and arterial roads such as 170th/178th Street and Whitemud Drive.

### Designated Schools:

#### *Public:*

Afton School, Elementary

Westlawn School, Junior High

Jasper Place School, Senior High

#### *Catholic:*

St. Justin, Pre-Kindergarten, Elementary

St. Benedict, Elementary

St. Thomas More, Junior High

St. Francis Xavier, Senior High

## Terra Losa

Anyone looking for a low-maintenance home surrounded by excellent amenities is sure to love life in Terra Losa. Consisting mostly of apartment-style condos (with a few townhome and duplex options), the neighbourhood includes ample green space as well as shops and services in nearly every direction (including West Edmonton Mall to the south). Bounded by 178th Street to the west, 100th Ave to the north, 170th Street to the east and 95th Ave to the south, Terra Losa also sits within proximity to both the Anthony Henday and Whitemud Drive.

### Designated Schools:

#### *Public:*

Afton School, Elementary  
Westlawn School, Junior High  
Jasper Place School, Senior High

#### *Catholic:*

St. Justin, Pre-Kindergarten, Elementary  
St. Benedict, Elementary  
St. Thomas More, Junior High  
St. Francis Xavier, Senior High



## Thorncliffe

Defined by 178th Street to the west, 87th Ave to the north, 170th street to the east and Whitemud Drive to the south, Thorncliffe is a family-friendly community ripe with amenities. For starters, the area sits just south of ultra-popular West Edmonton Mall (featuring shops, services and entertainment venues galore), the Misericordia Hospital and Jasper Place Fitness and Leisure Centre. Locally, the neighbourhood includes two elementary schools, an after-school care centre, basketball courts, soccer fields and a network of walking paths spanning throughout. While apartment-style condos are the most popular home style in the area, there are several single-family, townhome and duplex options to choose from.

### Designated Schools:

#### *Public:*

Thorncliffe School, Elementary  
Parkview School, Elementary, Junior High  
Jasper Place School, Senior High

#### *Catholic:*

St. Justin, Pre-Kindergarten, Elementary  
H.E. Beriault, Junior High  
Blessed Oscar Romero, Senior High

## Wedgewood Heights

Located just west of the Anthony Henday and south of Lessard Road, Wedgewood Heights is a commute-friendly neighbourhood surrounded by nature. Thanks to its proximity to the North Saskatchewan River, many single-family homes within the community benefit from beautiful ravine views. The area also sits close to several desirable amenities, including schools, shops, services, golf courses and much more - all accessible within a 10-minute drive or less.

### Designated Schools:

#### *Public:*

Michael A. Kostek School, Elementary  
S. Bruce Smith School, Junior High  
Jasper Place School, Senior High

#### *Catholic:*

Good Shepherd, Pre-Kindergarten,  
Elementary  
H.E. Beriault, Junior High  
Blessed Oscar Romero, Senior High



# Zones - 57, 58 & 59 - West Anthony Henday

**Edgemont** ..... 39

**Glastonbury** ..... 40

**Granville** ..... 41

**Hawks Ridge** ..... 42

**Riverview** ..... 43

**Rosenthal** ..... 44

**Secord** ..... 45

**Starling**..... 46

**The Hamptons** ..... 47

**Trumpeter**..... 48

**Zone 58 – Lewis Estates** ..... 49

## Zones - 57, 58 & 59 - Amenities

### SHOPPING VENUES AND SERVICES

Currents of Windermere  
The Marketplace at Callingwood  
St. Albert Centre  
West Edmonton Mall

### RECREATION CENTRES

Fountain Park Recreation Centre  
Jamie Platz Family YMCA  
Jasper Place Fitness and Leisure Centre  
Peter Hemingway Fitness and Leisure Centre  
Terwillegar Community Recreation Centre

### POPULAR PARKS AND GOLF COURSES

Buena Vista Park  
Callingwood Park  
Louis Hole Centennial Provincial Park  
Sir Wilfrid Laurier Park  
Terwillegar Park  
Whitemud Park  
Edmonton Country Club  
Edmonton Petroleum Golf and Country Club  
Glendale Golf and Country Club  
Jagare Ridge Golf Club  
Lewis Estates Golf Course  
The Ranch Golf and Country Club  
River Ridge Golf and Country Club  
Windermere Golf and Country Club

### LOCAL SCHOOLS

To see the complete list of Northwest Edmonton public and Catholic schools [click here](#).

## Edgemont

Edgemont is a brand-new community bounded by Winterburn Road to the west, Lessard Road to the north, Anthony Henday to the east and Wedgewood Creek Ravine (Maskêkosihk Trail) to the south. The neighbourhood currently features a variety of home styles, including single-family dwellings (front and rear detached), townhomes, duplexes and apartment-style condos - with many more to come. Commercial amenities are also planned for the neighbourhood, though schools, shops, services and more sit just a short distance away.

### Designated Schools:

#### *Public:*

Winterburn School, Elementary  
Michael Phair School, Junior High  
Jasper Place School, Senior High

#### *Catholic:*

Good Shepherd, Pre-Kindergarten,  
Elementary  
H.E. Beriault, Junior High  
Blessed Oscar Romero, Senior High



## Glastonbury

Glastonbury is a west Edmonton neighbourhood defined by Whitemud Drive to the north and the Anthony Henday to the east. Extremely accessible, the community is a popular choice among Edmontonians looking for a quick commute. Extremely amenity-friendly, the area is also home to several shops, services, restaurants and other conveniences located to both the north and south. Though still under development, real estate in the area already consists of single-family homes, duplexes, townhomes and apartment-style condos.

### Designated Schools:

#### *Public:*

Kim Hung School, Elementary, Junior High  
Jasper Place School, Senior High

#### *Catholic:*

St. Martha, Pre-Kindergarten, Elementary  
Sister Annata Brockman, Elementary, Junior High  
Blessed Oscar Romero, Senior High

## Granville

Granville is one of several neighbourhoods comprising west Edmonton's Grange area. Although construction is still underway, the community already features a broad range of both natural and commercial amenities, including a shopping district (The Shops of Granville, Costco, etc.) and local school as well as several parks, ponds, green spaces and walking paths. New, single-family dwellings are the dominant home style in the area, but there are also several townhome, duplex and apartment-style condo options available.

### Designated Schools:

#### *Public:*

Kim Hung School, Elementary, Junior High  
Jasper Place School, Senior High

#### *Catholic:*

St. Martha, Pre-Kindergarten, Elementary  
Sister Annata Brockman, Elementary,  
Junior High  
Blessed Oscar Romero, Senior High



## Hawks Ridge

Part of northwest Edmonton's beautiful Big Lake district, Hawk Ridge is a developing neighbourhood situated west of Henday, along Winterburn Road. An excellent opportunity for anyone looking to buy into a promising new community, real estate in the area consists of front attached and rear laned single-family homes, duplexes and townhomes. Several amenities are planned for the area, including a future school and park site, open green spaces, stormwater pond and an environmental reserve. Currently, residents of Hawks Ridge are served by many convenient amenities in the surrounding neighbourhoods.

### Designated Schools:

#### *Public:*

David Thomas King School, Elementary, Junior High  
Jasper Place School, Senior High

#### *Catholic:*

Our Lady of Peace, Pre-Kindergarten, Elementary  
Annunciation, Elementary  
St. Thomas More, Junior High  
St. Francis Xavier, Senior High

## Riverview

Aptly named, Riverview is a brand-new community located next to the North Saskatchewan River- near Maskêkosihk Trail and Winterburn Road. Though currently under construction, home styles in Riverview will include single-family units (front attached and rear lane), townhomes and duplexes. The nearby Anthony Henday provides residents convenient access to amenities, though plans for local shops, services, parks, playgrounds, walking trails and much more are currently underway.

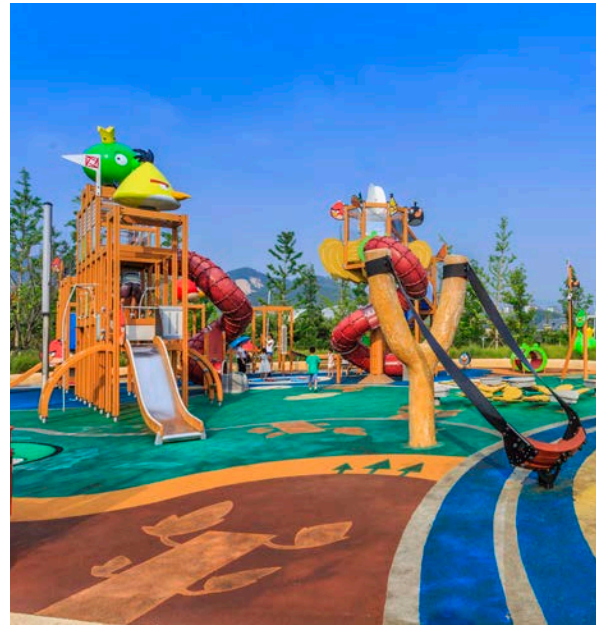
### Designated Schools:

#### *Public:*

Centennial School, Elementary  
S. Bruce Smith School, Junior High  
Jasper Place School, Senior High

#### *Catholic:*

Good Shepherd, Pre-Kindergarten,  
Elementary  
H.E. Beriault, Junior High  
Blessed Oscar Romero, Senior High



## Rosenthal

Rosenthal is a developing west Edmonton community characterized by stylish homes and beautiful outdoor spaces. Home styles in the area consist of modern single-family homes, duplexes, apartment-style condos and townhomes, with further development underway. Although there are already several ponds, walking paths and open green spaces within the community, future plans include additional natural features as well as a K-9 school and a high school/recreation centre. Rosenthal residents also enjoy having the Whitemud and Anthony Henday, as well as several shops and services, all within arm's reach.

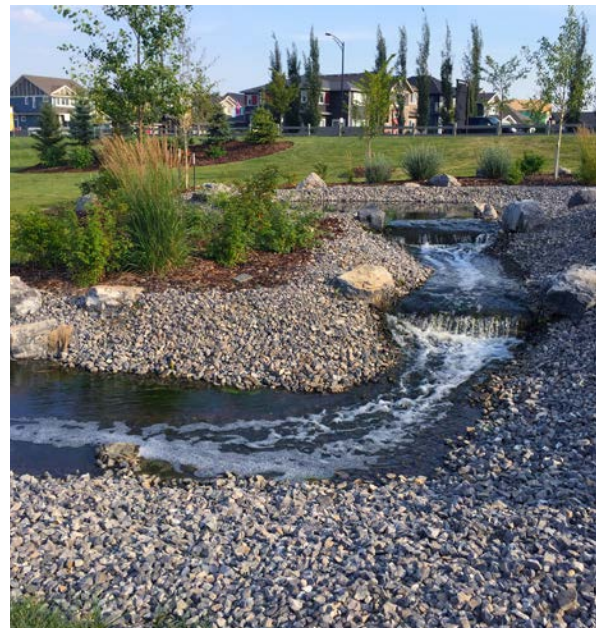
### Designated Schools:

#### *Public:*

Laperle School, Elementary  
Michael Phair School, Junior High  
Jasper Place School, Senior High

#### *Catholic:*

Bishop David Motiuk, Pre-Kindergarten,  
Elementary, Junior High  
Blessed Oscar Romero, Senior High  
St. Francis Xavier, Senior High



## Secord

Secord is a new west Edmonton community defined by 231st Street to the west, Hwy 16A to the north and Winterburn Road to the east. Real estate options in this developing neighbourhood are diverse, featuring single-family homes (front attached and rear laned), townhomes and duplexes. Local amenities include beautiful open green spaces, ponds, walking paths and playgrounds, while just outside the neighbourhood sit several schools, shops, services and much more. Future plans are also said to include a large commercial district in the community's far northwest corner.

### Designated Schools:

#### *Public:*

David Thomas King School, Elementary,  
Junior High  
Jasper Place School, Senior High

#### *Catholic:*

Bishop David Motiuk, Pre-Kindergarten,  
Elementary, Junior High  
Blessed Oscar Romero, Senior High  
St. Francis Xavier, Senior High



## Starling

Located near the corner of the northwest Anthony Henday and Ray Gibbons Drive, Starling is an up-and-coming community surrounded by nature. To the west of the neighbourhood sits several natural lakes, wetlands and open green space, while Lois Hole Provincial Park and the Big Lake wildlife corridor can be found just moments away. The community itself features several stormwater ponds and walking paths, all of which are overseen by modern single-family homes, townhomes and duplexes. Thanks to Starling's ultra-accessible location, important amenities such as schools, shops, services (and more), can be reached within moments.

### Designated Schools:

#### *Public:*

David Thomas King School, Elementary, Junior High  
Jasper Place School, Senior High

#### *Catholic:*

Our Lady of Peace, Pre-Kindergarten, Elementary  
Annunciation, Elementary  
St. Thomas More, Junior High  
St. Francis Xavier, Senior High

## The Hamptons

Hamptons real estate consists predominantly of single-family homes with duplex, townhome and apartment-style condos scattered throughout. Bounded by Winterburn Road to the west, 62nd Ave to the north, 199th Street to the east and Lessard Road to the south, residents here enjoy convenient access to both the Anthony Henday and Whitemud Drive. Local amenities include several stormwater ponds, walking paths and a K-9 school, while shops, services and more can be found along the neighbourhood's eastern edge.

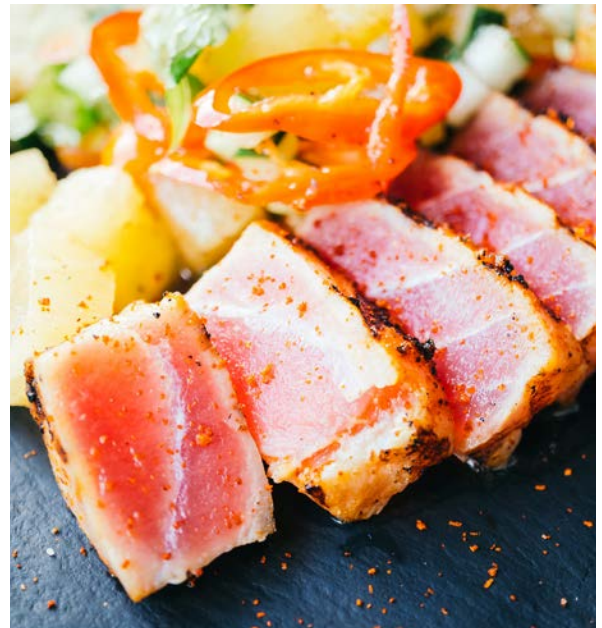
### Designated Schools:

#### *Public:*

Bessie Nichols School, Elementary,  
Junior High  
Kim Hung School, Elementary, Junior  
High  
Jasper Place School, Senior High

#### *Catholic:*

St. Martha, Pre-Kindergarten,  
Elementary  
Sister Annata Brockman, Elementary,  
Junior High  
Blessed Oscar Romero, Senior High



## Trumpeter

A developing community located at the corner of the Anthony Henday and Yellowhead Trail, Trumpeter is an outdoor lover's delight. Big Lake, Lois Hole Centennial Provincial Park and the Glendale Golf and Country Club sit just moments away while locally, the neighbourhood is home to ponds, open green spaces and walking trails. While single-family dwellings are the dominant home style in the area, the neighbourhood does feature several townhome and duplex models. Residents here also enjoy having quick access to the best amenities in both St. Albert and west Edmonton.

### Designated Schools:

#### *Public:*

David Thomas King School, Elementary, Junior High  
Jasper Place School, Senior High

#### *Catholic:*

Our Lady of Peace, Pre-Kindergarten, Elementary  
Annunciation, Elementary  
St. Thomas More, Junior High  
St. Francis Xavier, Senior High

# Zone 58 – Lewis Estates

**Breckenridge Greens** ..... 51

**Potter Greens** ..... 52

**Stewart Greens** ..... 53

**Suder Greens** ..... 54

**Webber Greens** ..... 55

**West Edmonton Schools** ..... 56

## Zone 58 – Amenities

### SHOPPING VENUES AND SERVICES

Currents of Windermere  
The Marketplace at Callingwood  
St. Albert Centre  
West Edmonton Mall

### RECREATION CENTRES

Fountain Park Recreation Centre  
Jamie Platz Family YMCA  
Jasper Place Fitness and Leisure Centre  
Peter Hemingway Fitness and Leisure Centre  
Terwillegar Community Recreation Centre

### POPULAR PARKS AND GOLF COURSES

Buena Vista Park  
Callingwood Park  
Louis Hole Centennial Provincial Park  
Sir Wilfrid Laurier Park  
Terwillegar Park  
Whitemud Park  
Edmonton Country Club  
Edmonton Petroleum Golf and Country Club  
Glendale Golf and Country Club  
Jagare Ridge Golf Club  
Lewis Estates Golf Course  
The Ranch Golf and Country Club  
River Ridge Golf and Country Club  
Windermere Golf and Country Club

### LOCAL SCHOOLS

To see the complete list of Northwest Edmonton public and Catholic schools [click here](#).

## Breckenridge Greens

Breckenridge Greens is defined by Winterburn Road to the west, Suder Greens Drive to the north, Lewis Estates Boulevard to the east and Whitemud Drive to the south. Established during the 1990s, the community is made up of mostly single-family homes (roughly 70%), and apartment-style condos. Residents in the neighbourhood benefit from an array of desirable amenities, including ample park and green space, shopping districts, a local golf course and convenient access to the nearby Anthony Henday.

### Designated Schools:

#### *Public:*

Winterburn School, Elementary  
Michael Phair School, Junior High  
Jasper Place School, Senior High

#### *Catholic:*

Bishop David Motiuk, Pre-Kindergarten,  
Elementary, Junior High  
Blessed Oscar Romero, Senior High  
St. Francis Xavier, Senior High



## Potter Greens

One of several new neighbourhoods to make up the Lewis Farms Area, Potter Greens is a picturesque community comprised almost entirely of modern single-family homes. While still under development, other housing styles are anticipated - including duplexes, townhomes and apartment-style condos. The area also includes plans for a future school and LRT station. Potter Greens is also known for its inclusion of the Lewis Estates Golf Course and Potter Greens Pond – ideal for avid golfers and nature lovers alike. Nearby amenities include shops, services, schools and restaurants, as well as several major commuter routes.

### Designated Schools:

#### *Public:*

Winterburn School, Elementary  
Michael Phair School, Junior High  
Jasper Place School, Senior High

#### *Catholic:*

Bishop David Motiuk, Pre-Kindergarten, Elementary, Junior High  
Blessed Oscar Romero, Senior High  
St. Francis Xavier, Senior High

## Stewart Greens

Located at the corner of Hwy 16A (100th Ave) and the west Anthony Henday, Stewart Greens is a promising new neighbourhood still undergoing development. Home styles in the area currently include beautifully crafted single-family homes, modern duplexes and townhomes with many more on the way. Thanks to its convenient location, all major amenities, including schools, shopping centres (West Edmonton Mall), recreation, restaurants, and more, are all easily accessible via several nearby commuter routes.

### Designated Schools:

#### *Public:*

Laperle School, Elementary  
Michael Phair School, Junior High  
Jasper Place School, Senior High

#### *Catholic:*

Bishop David Motiuk, Pre-Kindergarten,  
Elementary, Junior High  
Blessed Oscar Romero, Senior High  
St. Francis Xavier, Senior High



## Suder Greens

Home to west Edmonton's beautiful Lewis Estates Golf Course, Suder Greens provides residents the opportunity to tee-off just steps away from their front door. Though still under development, the area also offers a diverse range of modern home styles, including single-family dwellings, semi-detached units and apartment-style condos - ideal for nearly any lifestyle and budget. Winterburn Road, Webber Greens Drive and the nearby Anthony Henday provide homeowners swift access to shops, services, schools and all the other great amenities west Edmonton has to offer.

### Designated Schools:

#### *Public:*

Winterburn School, Elementary  
Michael Phair School, Junior High  
Jasper Place School, Senior High

#### *Catholic:*

Bishop David Motiuk, Pre-Kindergarten, Elementary, Junior High  
Blessed Oscar Romero, Senior High  
St. Francis Xavier, Senior High

## Webber Greens

Webber Greens is flanked by Winterburn Road to the west and Anthony Henday Drive to the east. Remarkably accessible, this neighbourhood's convenient location makes it easy to reach the Yellowhead, Whitemud and the greater City of Edmonton in a hurry. Real estate in Webber Greens incorporates a mixture of single-family homes, duplexes, townhomes and apartment-style condos. Local amenities include a public elementary school (with another school planned), a lake, parks and green space and the Lewis Estates Golf Course. Grocery stores, restaurants, services and other commercial amenities can also be found along bordering Webber Greens Drive (87th Ave).

### Designated Schools:

#### *Public:*

Winterburn School, Elementary  
Michael Phair School, Junior High  
Jasper Place School, Senior High

#### *Catholic:*

Bishop David Motiuk, Pre-Kindergarten,  
Elementary, Junior High  
Blessed Oscar Romero, Senior High  
St. Francis Xavier, Senior High



# West Edmonton Schools

## PUBLIC

### Aldergrove School, Elementary

8525 182 ST NW

Programs:

- Behaviour and Learning Assistance
- Regular Program

### Afton School, Elementary

16604 91 Ave NW

Programs:

- Arts Core

### Belmead School, Elementary

9011 182 ST NW

Programs:

- Full-day Kindergarten
- Interactions
- Regular Program

### Bessie Nichols School, Elementary, Junior High

189 HEMINGWAY ROAD NW

Programs:

- Regular Program

### Callingwood School, Pre-Kindergarten, Elementary

17335 76 AVE NW

Programs:

- Behaviour and Learning Assistance
- Regular Program

**Centennial School, Elementary**

17420 57 AVE NW

Programs:

- Regular Program

**Crestwood School. Elementary, Junior High**

9735 144 ST NW

Programs:

- Academic Alternative
- Challenge
- Regular Program

**David Thomas King School, Elementary, Junior High**

22707 97 AVENUE NW

Programs:

- Regular Program

**Glendale School, Elementary, Junior High**

9812 161 ST NW

Programs:

- Full-day Kindergarten
- Interactions
- Regular Program

**Glenora School, Elementary**

13520 102 AVE NW

Programs:

- International Baccalaureate Middle Years
- Regular Program

**Hillcrest School, Junior High**

16400 80 AVE NW

Programs:

- Literacy
- Opportunity
- Regular Program

**James Gibbons School, Elementary**

8945 153 ST NW

Programs:

- Traditional

**Jasper Place School, Senior High**

8950 163 ST NW

Programs:

- Advanced Placement
- Interactions
- International Baccalaureate Certificate
- International Baccalaureate Diploma
- Regular Program

**Kim Hung School, Elementary, Junior High**

1950 GLASTONBURY BOULEVARD NW

Programs:

- Regular Program

**Laperle School, Elementary**

18715 97A AVE NW

Programs:

- Regular Program
- Strategies

**Laurier Heights School, Elementary, Junior High**

8210 142 ST NW

Programs:

- French Immersion
- Regular Program

**Lymburn School, Elementary**

18710 72 AVE NW

Programs:

- Cogito
- Interactions
- Regular Program

**Lynwood School, Elementary**

15451 84 AVE NW

Programs:

- Challenge
- Community Learning Skills
- Community Learning Skills/Behaviour and Learning Assistance
- Regular Program

**Meadowlark School, Elementary**

9150 160 ST NW

Programs:

- Chinese (Mandarin) Bilingual
- Regular Program

**Michael A. Kostek School, Elementary**

5303 190 ST NW

Programs:

- Regular Program

**Michael Phair School, Junior High**

9407 211 STREET NW

Programs:

- Cogito
- Regular Program

**Ormsby School, Elementary**

6323 184 ST NW

Programs:

- Opportunity
- Regular Program
- Strategies

**Parkview School, Elementary, Junior High**

14313 92 AVE NW

Programs:

- Chinese (Mandarin) Bilingual
- Interactions
- Pre-Advanced Placement
- Regular Program

**Patricia Heights School, Elementary**

16216 78 AVE NW

Programs:

- Regular Program

**Ross Sheppard School, Senior High**

13546 111 AVE NW

Programs:

- Chinese (Mandarin) Bilingual
- Community Learning Skills
- French Immersion
- Interactions
- International Baccalaureate Certificate
- International Baccalaureate Diploma
- Regular Program
- Sports Alternative

**S. Bruce Smith School, Junior High**

5545 184 ST NW

Programs:

- Opportunity
- Pre-Advanced Placement
- Regular Program
- Strategies

**Sherwood School, Elementary**

9550 152 ST NW

Programs:

- Full-day Kindergarten
- Opportunity
- Regular Program

**Thorncliffe School, Elementary**

8215 175 ST NW

Programs:

- Behaviour and Learning Assistance
- Literacy
- Regular Program

**Westbrook School, Elementary**

11915 40 AVE NW

Programs:

- Challenge
- Regular Program

**Westlawn School, Junior High**

9520 165 ST NW

Programs:

- Behaviour and Learning Assistance
- Individual Support
- Regular Program
- Strategies

**Westminster School, Junior High**

13712 104 AVE NW

Programs:

- Behaviour and Learning Assistance
- International Baccalaureate Middle Years
- Regular Program
- Strategies

**Winterburn School, Elementary**

9527 WINTERBURN ROAD NW

Programs:

- Regular Program

**CATHOLIC****Annunciation, Elementary**

9325 165 ST NW

Program:

- International Baccalaureate - Primary Years Programme
- Full Day Kindergarten

**Blessed Oscar Romero, Senior High**

17760 69 AVE NW

Program:

- Advanced Placement
- Filipino Language and Culture
- Spanish Language and Culture

**Bishop David Motiuk, Pre-Kindergarten, Elementary, Junior High**

855 Lewis Greens Dr NW, Edmonton, AB

Program:

- International Baccalaureate - Primary Years Programme
- International Baccalaureate - Middle Years Programme

**Good Shepherd, Pre-Kindergarten, Elementary**

18111 57 AVE NW

**H.E. Beriault, Junior High**

8125 167 ST NW

Program:

- Enhanced Academic Program (EAP)

**Our Lady of Peace, Pre-Kindergarten, Elementary**

15911 110 AVE NW

Program:

- Full Day Kindergarten
- Nehiyaw Pimatisiwin Cree

**Our Lady of the Prairies, Pre-Kindergarten, Elementary**

17655 64 AVE NW

Program:

- French Immersion
- Full Day Kindergarten (English Program)

**Our Lady of Victories, Pre-Kindergarten, Elementary**

7925 158 ST NW

**Sister Annata Brockman, Elementary, Junior High**

355 HEMINGWAY RD NW

Program:

- Filipino Language and Culture

**St. Benedict, Elementary**

18015 93 AVE NW

Program:

- Hockey Academy

**St. Francis Xavier, Senior High**

9250 163 ST NW

Program:

- Advanced Placement
- Spanish Language and Culture
- Baseball Academy
- Golf Academy
- Hockey Academy
- Lacrosse Academy
- Soccer Academy

**St. Joseph, Senior High**

10830 109 ST NW

Program:

- Career Skills Centre
- International Baccalaureate - Diploma Programme
- International Baccalaureate - Career Related Programme
- Jean Forest Leadership Academy: All Girls
- Guided Customized Learning (GCL)
- Spanish Language and Culture
- Italian Language and Culture

**St. Justin, Pre-Kindergarten, Elementary**

8405 175 ST NW

Program:

- Full Day Kindergarten

**St. Mark, Junior High**

11625 125 ST NW

Program:

- Recreation Academy

**St. Martha, Pre-Kindergarten, Elementary**

7240 180 ST NW

**St. Paul, Elementary**

14410 96 AVE NW

Program:

- Spanish Language and Culture

**St. Rose, Junior High**

8815 145 ST NW

Program:

- Accelerated Math and Science
- Spanish Language and Culture

**St. Thomas More, Junior High**

9610 165 ST NW

Program:

- International Baccalaureate - Middle Years Programme
- Spanish Language and Culture
- Nehiyaw Pimatisiwin Cree
- Baseball Academy
- Hockey Academy
- Soccer Academy
- Elite Athletes Academy

**St. Vincent, Pre-Kindergarten, Elementary**

10530 138 ST NW