



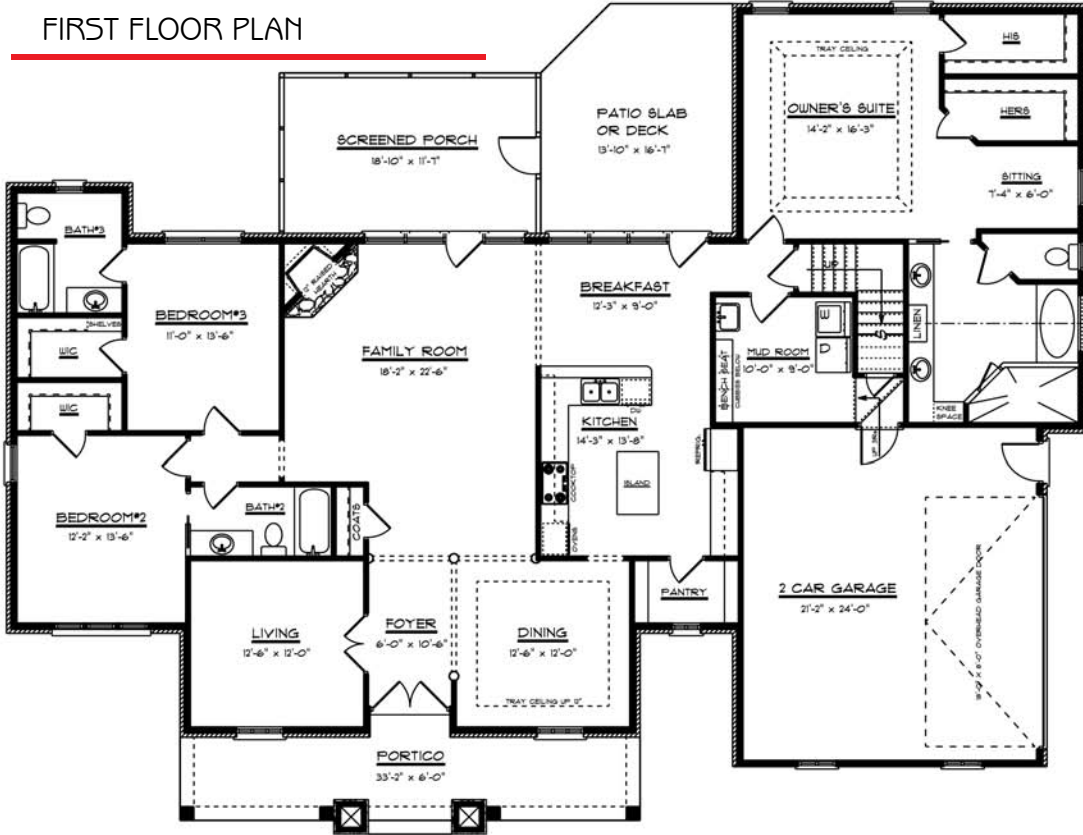
Reid

DESIGN FEATURES:

- All living area is on the first floor
- Large great room with cathedral ceiling
- Combination of kitchen with breakfast for large get togethers
- 2 secondary bedrooms with private baths
- Hugh master bedroom with sitting area and a double tray ceiling including 2 large walk in closets
- Large main bath with 8 sided hexagon ceiling for chandelier, 2 vanities and separate commode room, large shower with 2 shower heads and rain shower head overhead
- Nice envitinig front porch
- Hugh screen porch off family room
- Private patio off the breakfast area

Reid

FIRST FLOOR PLAN



Living	3066 sq. ft.
Main	2560 sq. ft.
Bonus	507 sq. ft.
Garage	536 sq. ft.
Portico	194 sq. ft.
Screened	226 sq. ft.
Patio/Deck	217 sq. ft.

Roger Holloway
 Broker/Realtor®
 ProStead Realty
 704-345-3400

SECOND FLOOR PLANS

